

RPL6 Antibody (N-term)

Purified Rabbit Polyclonal Antibody (Pab)

Catalog # AP20617a

Product Information

Application	WB, FC, IF, IHC-P, E
Primary Accession	Q02878
Reactivity	Human
Host	Rabbit
Clonality	Polyclonal
Isotype	Rabbit IgG
Clone Names	RB48055
Calculated MW	32728

Additional Information

Gene ID	6128
Other Names	60S ribosomal protein L6, Neoplasm-related protein C140, Tax-responsive enhancer element-binding protein 107, TaxREB107, RPL6, TXREB1
Target/Specificity	This RPL6 antibody is generated from a rabbit immunized with a KLH conjugated synthetic peptide between 2-35amino acids from the N-terminal region of human RPL6.
Dilution	WB~~1:1000 FC~~1:25 IF~~1:25 IHC-P~~1:100~500 E~~Use at an assay dependent concentration.
Format	Purified polyclonal antibody supplied in PBS with 0.09% (W/V) sodium azide. This antibody is purified through a protein A column, followed by peptide affinity purification.
Storage	Maintain refrigerated at 2-8°C for up to 2 weeks. For long term storage store at -20°C in small aliquots to prevent freeze-thaw cycles.
Precautions	RPL6 Antibody (N-term) is for research use only and not for use in diagnostic or therapeutic procedures.

Protein Information

Name	RPL6
Synonyms	TXREB1
Function	Component of the large ribosomal subunit (PubMed: 12962325 , PubMed: 23636399 , PubMed: 25901680 , PubMed: 25957688 ,

PubMed:[32669547](#)). The ribosome is a large ribonucleoprotein complex responsible for the synthesis of proteins in the cell (PubMed:[12962325](#), PubMed:[23636399](#), PubMed:[25901680](#), PubMed:[25957688](#), PubMed:[32669547](#)).

Cellular Location

Cytoplasm, cytosol. Cytoplasm Rough endoplasmic reticulum {ECO:0000250|UniProtKB:Q2YGT9} Note=Detected on cytosolic polysomes (PubMed:25957688). Detected in ribosomes that are associated with the rough endoplasmic reticulum (By similarity). {ECO:0000250|UniProtKB:Q2YGT9, ECO:0000269|PubMed:25957688}

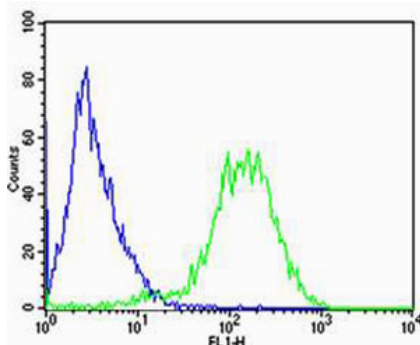
Background

Specifically binds to domain C of the Tax-responsive enhancer element in the long terminal repeat of HTLV-I.

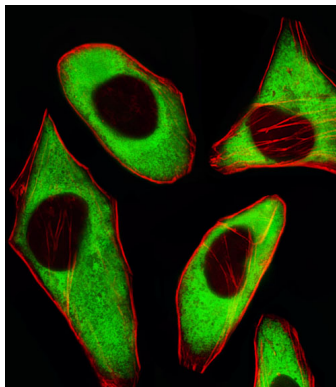
References

Zaman G.J.R.,et al.Nucleic Acids Res. 21:1673-1673(1993).
Morita T.,et al.AIDS Res. Hum. Retroviruses 9:115-121(1993).
Kenmochi N.,et al.J. Hum. Genet. 45:290-293(2000).
Ohta K.,et al.J. Mol. Endocrinol. 12:85-92(1994).
Odintsova T.I.,et al.J. Protein Chem. 22:249-258(2003).

Images

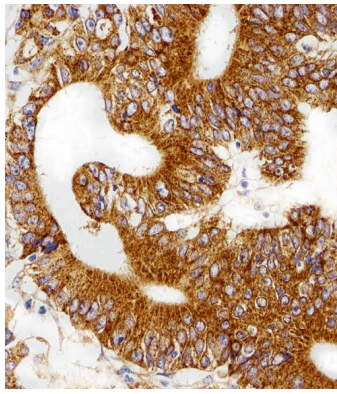


Flow cytometric analysis of Jurkat cells using RPL6 Antibody (N-term)(green, Cat#AP20617a) compared to an isotype control of rabbit IgG(blue). AP20617a was diluted at 1:25 dilution. An Alexa Fluor® 488 goat anti-rabbit IgG at 1:400 dilution was used as the secondary antibody.

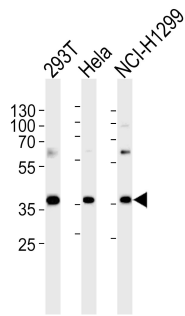


Fluorescent image of HeLa cells stained with RPL6 Antibody (N-term)(Cat#AP20617a). AP20617a was diluted at 1:25 dilution. An Alexa Fluor 488-conjugated goat anti-rabbit IgG at 1:400 dilution was used as the secondary antibody (green). Cytoplasmic actin was counterstained with Alexa Fluor® 555 conjugated with Phalloidin (red).

Immunohistochemical analysis of paraffin-embedded H. gastric carcinoma section using RPL6 Antibody (N-term)(Cat#NA). NA was diluted at 1:100 dilution. A peroxidase-conjugated goat anti-rabbit IgG at 1:400 dilution was used as the secondary antibody, followed by



DAB staining.



Western blot analysis of lysates from 293T, HeLa, NCI-H1299 cell line (from left to right), using RPL6 Antibody (N-term)(Cat. #AP20617a). AP20617a was diluted at 1:1000 at each lane. A goat anti-rabbit IgG H&L(HRP) at 1:5000 dilution was used as the secondary antibody. Lysates at 35ug per lane.

Please note: All products are 'FOR RESEARCH USE ONLY. NOT FOR USE IN DIAGNOSTIC OR THERAPEUTIC PROCEDURES'.