

CNDP1 Antibody (Center)

Purified Rabbit Polyclonal Antibody (Pab)

Catalog # AP20621c

Product Information

Application	WB, E
Primary Accession	Q96KN2
Reactivity	Human, Rat, Mouse
Host	Rabbit
Clonality	Polyclonal
Isotype	Rabbit IgG
Clone Names	RB47679
Calculated MW	56692

Additional Information

Gene ID	84735
Other Names	Beta-Ala-His dipeptidase, CNDP dipeptidase 1, Carnosine dipeptidase 1, Glutamate carboxypeptidase-like protein 2, Serum carnosinase, CNDP1, CN1, CPGL2
Target/Specificity	This CNDP1 antibody is generated from a rabbit immunized with a KLH conjugated synthetic peptide between 128-142 amino acids from the Central region of human CNDP1.
Dilution	WB~~1:1000 E~~Use at an assay dependent concentration.
Format	Purified polyclonal antibody supplied in PBS with 0.09% (W/V) sodium azide. This antibody is purified through a protein A column, followed by peptide affinity purification.
Storage	Maintain refrigerated at 2-8°C for up to 2 weeks. For long term storage store at -20°C in small aliquots to prevent freeze-thaw cycles.
Precautions	CNDP1 Antibody (Center) is for research use only and not for use in diagnostic or therapeutic procedures.

Protein Information

Name	CNDP1 (HGNC:20675)
Synonyms	CN1, CPGL2
Function	Catalyzes the peptide bond hydrolysis in Xaa-His dipeptides, displaying the highest activity toward carnosine (beta-alanyl-L- histidine) and anserine

(beta-alanyl-3-methyl-histidine).

Cellular Location

Secreted.

Tissue Location

Found in serum and adult nervous central system. Absent in serum from patients with homocarnosinosis

References

Chen J.M.,et al.Submitted (OCT-2001) to the EMBL/GenBank/DDBJ databases.

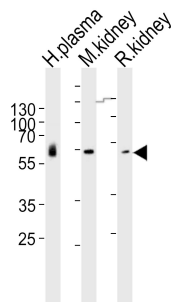
Janssen B.,et al.Diabetes 54:2320-2327(2005).

Clark H.F.,et al.Genome Res. 13:2265-2270(2003).

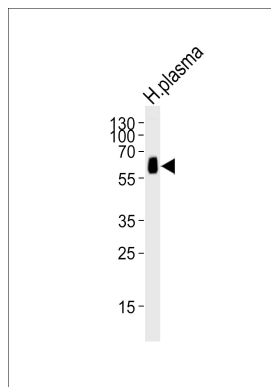
Nusbaum C.,et al.Nature 437:551-555(2005).

Lenney J.F.,et al.Clin. Chim. Acta 123:221-231(1982).

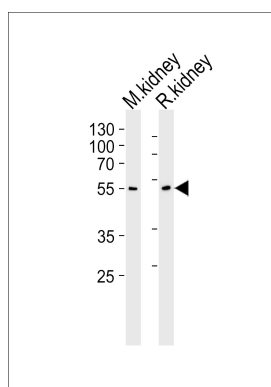
Images



Western blot analysis of lysates from human plasma, mouse kidney, rat kidney tissue lysate (from left to right), using CNDP1 Antibody (Center)(Cat. #AP20621c). AP20621c was diluted at 1:1000 at each lane. A goat anti-rabbit IgG H&L(HRP) at 1:10000 dilution was used as the secondary antibody. Lysates at 20ug per lane.



Western blot analysis of lysate from human plasma tissue lysate, using CNDP1 Antibody (Center)(Cat. #AP20621c). AP20621c was diluted at 1:1000. A goat anti-rabbit IgG H&L(HRP) at 1:10000 dilution was used as the secondary antibody. Lysate at 20ug.



Western blot analysis of lysates from mouse kidney and rat kidney tissue lysate(from left to right), using CNDP1 Antibody (Center)(RB43679). RB43679 was diluted at 1:1000 at each lane. A goat anti-rabbit IgG H&L(HRP) at 1:5000 dilution was used as the secondary antibody. Lysates at 35ug per lane.

Please note: All products are 'FOR RESEARCH USE ONLY. NOT FOR USE IN DIAGNOSTIC OR THERAPEUTIC PROCEDURES'.