

RAD9B Antibody (C-term)

Purified Rabbit Polyclonal Antibody (Pab)

Catalog # AP20632c

Product Information

Application	WB, E
Primary Accession	Q6WBX8
Reactivity	Human
Host	Rabbit
Clonality	Polyclonal
Isotype	Rabbit IgG
Clone Names	RB49841
Calculated MW	47832

Additional Information

Gene ID	144715
Other Names	Cell cycle checkpoint control protein RAD9B, DNA repair exonuclease rad9 homolog B, hRAD9B, RAD9B
Target/Specificity	This RAD9B antibody is generated from a rabbit immunized with a KLH conjugated synthetic peptide between 394-428 amino acids from the C-terminal region of human RAD9B.
Dilution	WB~1:1000 E~Use at an assay dependent concentration.
Format	Purified polyclonal antibody supplied in PBS with 0.09% (W/V) sodium azide. This antibody is purified through a protein A column, followed by peptide affinity purification.
Storage	Maintain refrigerated at 2-8°C for up to 2 weeks. For long term storage store at -20°C in small aliquots to prevent freeze-thaw cycles.
Precautions	RAD9B Antibody (C-term) is for research use only and not for use in diagnostic or therapeutic procedures.

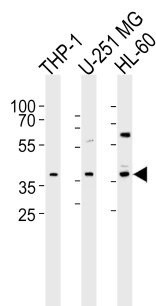
Protein Information

Name	RAD9B
Tissue Location	Expressed in testis and skeletal muscle.

References

Hopkins K.M.,et al.Cancer Res. 63:5291-5298(2003).
Ota T.,et al.Nat. Genet. 36:40-45(2004).
Scherer S.E.,et al.Nature 440:346-351(2006).
Dufault V.M.,et al.Genomics 82:644-651(2003).

Images



Western blot analysis of lysates from THP-1, U-251 MG, HL-60 cell line (from left to right), using RAD9B Antibody (C-term)(Cat. #AP20632c). AP20632c was diluted at 1:1000 at each lane. A goat anti-rabbit IgG H&L(HRP) at 1:5000 dilution was used as the secondary antibody. Lysates at 35ug per lane.

Please note: All products are 'FOR RESEARCH USE ONLY. NOT FOR USE IN DIAGNOSTIC OR THERAPEUTIC PROCEDURES'.