

# SMAD1 Antibody (Center)

Purified Rabbit Polyclonal Antibody (Pab)

Catalog # AP20642c

## Product Information

---

<b>Application</b>	WB, IHC-P, IF, E
<b>Primary Accession</b>	<a href="#">Q15797</a>
<b>Reactivity</b>	Human, Rat, Mouse
<b>Host</b>	Rabbit
<b>Clonality</b>	Polyclonal
<b>Isotype</b>	Rabbit IgG
<b>Clone Names</b>	RB43846
<b>Calculated MW</b>	52260

## Additional Information

---

<b>Gene ID</b>	4086
<b>Other Names</b>	Mothers against decapentaplegic homolog 1, MAD homolog 1, Mothers against DPP homolog 1, JV4-1, Mad-related protein 1, SMAD family member 1, SMAD 1, Smad1, hSMAD1, Transforming growth factor-beta-signaling protein 1, BSP-1, SMAD1, BSP1, MADH1, MADR1
<b>Target/Specificity</b>	This SMAD1 antibody is generated from a rabbit immunized with a KLH conjugated synthetic peptide between 163-196 amino acids from the Central region of human SMAD1.
<b>Dilution</b>	WB~~1:1000 IHC-P~~1:100~500 IF~~1:25 E~~Use at an assay dependent concentration.
<b>Format</b>	Purified polyclonal antibody supplied in PBS with 0.09% (W/V) sodium azide. This antibody is purified through a protein A column, followed by peptide affinity purification.
<b>Storage</b>	Maintain refrigerated at 2-8°C for up to 2 weeks. For long term storage store at -20°C in small aliquots to prevent freeze-thaw cycles.
<b>Precautions</b>	SMAD1 Antibody (Center) is for research use only and not for use in diagnostic or therapeutic procedures.

## Protein Information

---

<b>Name</b>	SMAD1
<b>Synonyms</b>	BSP1, MADH1, MADR1

<b>Function</b>	Transcriptional modulator that plays a role in various cellular processes, including embryonic development, cell differentiation, and tissue homeostasis (PubMed: <a href="#">9335504</a> ). Upon BMP ligand binding to their receptors at the cell surface, is phosphorylated by activated type I BMP receptors (BMPRIIs) and associates with SMAD4 to form a heteromeric complex which translocates into the nucleus acting as transcription factor (PubMed: <a href="#">33667543</a> ). In turn, the hetero-trimeric complex recognizes cis-regulatory elements containing Smad Binding Elements (SBEs) to modulate the outcome of the signaling network (PubMed: <a href="#">33667543</a> ). SMAD1/OAZ1/PSMB4 complex mediates the degradation of the CREBBP/EP300 repressor SNIP1. Positively regulates BMP4-induced expression of odontogenic development regulator MSX1 following IPO7-mediated nuclear import (By similarity).
<b>Cellular Location</b>	Cytoplasm. Nucleus Note=Cytoplasmic in the absence of ligand. Migrates to the nucleus when complexed with SMAD4 (PubMed:15647271). Co-localizes with LEMD3 at the nucleus inner membrane (PubMed:15647271). Exported from the nucleus to the cytoplasm when dephosphorylated (By similarity) {ECO:0000250 UniProtKB:P70340, ECO:0000269 PubMed:15647271}
<b>Tissue Location</b>	Ubiquitous. Highest expression seen in the heart and skeletal muscle

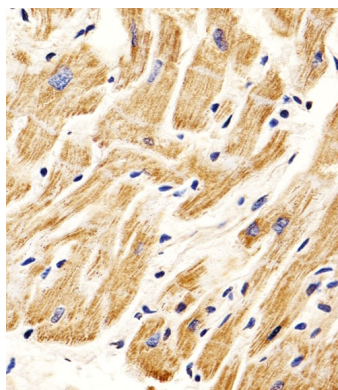
## Background

Transcriptional modulator activated by BMP (bone morphogenetic proteins) type 1 receptor kinase. SMAD1 is a receptor-regulated SMAD (R-SMAD). SMAD1/OAZ1/PSMB4 complex mediates the degradation of the CREBBP/EP300 repressor SNIP1.

## References

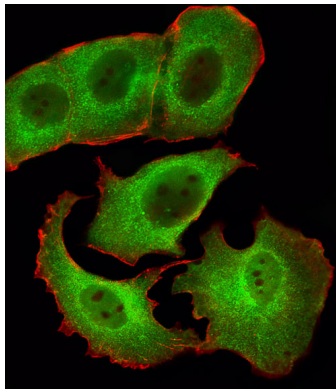
Riggins G.J.,et al.Nat. Genet. 13:347-349(1996).  
Liu F.,et al.Nature 381:620-623(1996).  
Hoodless P.A.,et al.Cell 85:489-500(1996).  
Lechleider R.J.,et al.J. Biol. Chem. 271:17617-17620(1996).  
Zhang Y.,et al.Nature 383:168-172(1996).

## Images

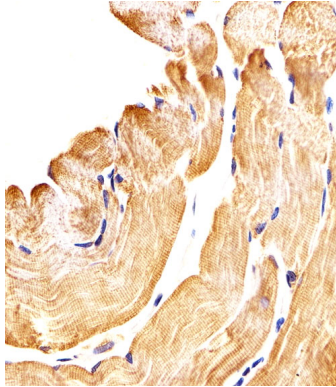


Immunohistochemical analysis of paraffin-embedded H. heart section using SMAD1 Antibody (Center)(Cat#AP20642c). AP20642c was diluted at 1:25 dilution. A peroxidase-conjugated goat anti-rabbit IgG at 1:400 dilution was used as the secondary antibody, followed by DAB staining.

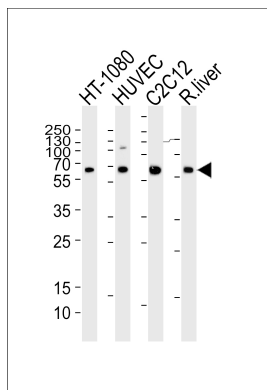
Fluorescent image of MCF-7 cells stained with SMAD1 Antibody (Center)(Cat#AP20642c). AP20642c was diluted at 1:25 dilution. An Alexa Fluor 488-conjugated goat anti-rabbit IgG at 1:400 dilution was used as the secondary antibody (green). Cytoplasmic actin was



counterstained with Alexa Fluor® 555 conjugated with Phalloidin (red).



Immunohistochemical analysis of paraffin-embedded H. skeletal muscle section using SMAD1 Antibody (Center)(Cat#AP20642c). AP20642c was diluted at 1:25 dilution. A peroxidase-conjugated goat anti-rabbit IgG at 1:400 dilution was used as the secondary antibody, followed by DAB staining.



Western blot analysis of lysates from HT-1080, HUVEC, mouse C2C12 cell line and rat liver tissue lysate(from left to right), using SMAD1 Antibody (Center)(Cat. #AP20642c). AP20642c was diluted at 1:1000 at each lane. A goat anti-rabbit IgG H&L(HRP) at 1:5000 dilution was used as the secondary antibody. Lysates at 35ug per lane.

## Citations

- [Mechanical force induces macrophage-derived exosomal UCHL3 promoting bone marrow mesenchymal stem cell osteogenesis by targeting SMAD1](#)

Please note: All products are 'FOR RESEARCH USE ONLY. NOT FOR USE IN DIAGNOSTIC OR THERAPEUTIC PROCEDURES'.