

HSP90 Antibody (C-term)

Purified Rabbit Polyclonal Antibody (Pab)

Catalog # AP20647c

Product Information

Application	WB, E
Primary Accession	P07900
Reactivity	Human, Rat, Mouse
Host	Rabbit
Clonality	Polyclonal
Isotype	Rabbit IgG
Clone Names	RB43827
Calculated MW	84660

Additional Information

Gene ID	3320
Other Names	Heat shock protein HSP 90-alpha, Heat shock 86 kDa, HSP 86, HSP86, Lipopolysaccharide-associated protein 2, LAP-2, LPS-associated protein 2, Renal carcinoma antigen NY-REN-38, HSP90AA1, HSP90A, HSPC1, HSPCA
Target/Specificity	This HSP90 antibody is generated from a rabbit immunized with a KLH conjugated synthetic peptide between 644-677 amino acids from the C-terminal region of human HSP90.
Dilution	WB~~1:1000 E~~Use at an assay dependent concentration.
Format	Purified polyclonal antibody supplied in PBS with 0.09% (W/V) sodium azide. This antibody is purified through a protein A column, followed by peptide affinity purification.
Storage	Maintain refrigerated at 2-8°C for up to 2 weeks. For long term storage store at -20°C in small aliquots to prevent freeze-thaw cycles.
Precautions	HSP90 Antibody (C-term) is for research use only and not for use in diagnostic or therapeutic procedures.

Protein Information

Name	HSP90AA1 (HGNC:5253)
Synonyms	HSP90A, HSPC1, HSPCA
Function	Molecular chaperone that promotes the maturation, structural maintenance and proper regulation of specific target proteins involved for instance in cell

cycle control and signal transduction. Undergoes a functional cycle that is linked to its ATPase activity which is essential for its chaperone activity. This cycle probably induces conformational changes in the client proteins, thereby causing their activation. Interacts dynamically with various co-chaperones that modulate its substrate recognition, ATPase cycle and chaperone function (PubMed:[11274138](#), PubMed:[12526792](#), PubMed:[15577939](#), PubMed:[15937123](#), PubMed:[27353360](#), PubMed:[29127155](#)). Engages with a range of client protein classes via its interaction with various co-chaperone proteins or complexes, that act as adapters, simultaneously able to interact with the specific client and the central chaperone itself (PubMed:[29127155](#)). Recruitment of ATP and co-chaperone followed by client protein forms a functional chaperone. After the completion of the chaperoning process, properly folded client protein and co- chaperone leave HSP90 in an ADP-bound partially open conformation and finally, ADP is released from HSP90 which acquires an open conformation for the next cycle (PubMed:[26991466](#), PubMed:[27295069](#)). Plays a critical role in mitochondrial import, delivers preproteins to the mitochondrial import receptor TOMM70 (PubMed:[12526792](#)). Apart from its chaperone activity, it also plays a role in the regulation of the transcription machinery. HSP90 and its co-chaperones modulate transcription at least at three different levels (PubMed:[25973397](#)). In the first place, they alter the steady-state levels of certain transcription factors in response to various physiological cues (PubMed:[25973397](#)). Second, they modulate the activity of certain epigenetic modifiers, such as histone deacetylases or DNA methyl transferases, and thereby respond to the change in the environment (PubMed:[25973397](#)). Third, they participate in the eviction of histones from the promoter region of certain genes and thereby turn on gene expression (PubMed:[25973397](#)). Binds bacterial lipopolysaccharide (LPS) and mediates LPS-induced inflammatory response, including TNF secretion by monocytes (PubMed:[11276205](#)). Antagonizes STUB1-mediated inhibition of TGF-beta signaling via inhibition of STUB1-mediated SMAD3 ubiquitination and degradation (PubMed:[24613385](#)). Mediates the association of TOMM70 with IRF3 or TBK1 in mitochondrial outer membrane which promotes host antiviral response (PubMed:[20628368](#), PubMed:[25609812](#)).

Cellular Location

Nucleus {ECO:0000250|UniProtKB:P07901}. Cytoplasm {ECO:0000250|UniProtKB:P07901}. Melanosome. Cell membrane. Mitochondrion. Note=Identified by mass spectrometry in melanosome fractions from stage I to stage IV

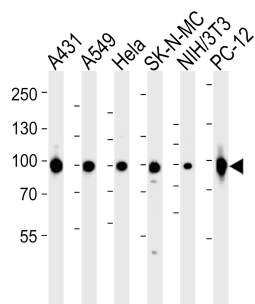
Background

Molecular chaperone that promotes the maturation, structural maintenance and proper regulation of specific target proteins involved for instance in cell cycle control and signal transduction. Undergoes a functional cycle that is linked to its ATPase activity. This cycle probably induces conformational changes in the client proteins, thereby causing their activation. Interacts dynamically with various co-chaperones that modulate its substrate recognition, ATPase cycle and chaperone function.

References

Soeda E.,et al.Nucleic Acids Res. 17:7108-7108(1989).
Yamazaki M.,et al.Agric. Biol. Chem. 54:3163-3170(1990).
Hickey E.,et al.Mol. Cell. Biol. 9:2615-2626(1989).
Chen B.,et al.Genomics 86:627-637(2005).
Ota T.,et al.Nat. Genet. 36:40-45(2004).

Images



Western blot analysis of lysates from A431, A549, HeLa, SK-N-MC, mouse NIH/3T3, rat PC-12 cell line (from left to right), using HSP90 Antibody (C-term)(Cat. #AP20647c). AP20647c was diluted at 1:1000 at each lane. A goat anti-rabbit IgG H&L(HRP) at 1:5000 dilution was used as the secondary antibody. Lysates at 35ug per lane.

Please note: All products are 'FOR RESEARCH USE ONLY. NOT FOR USE IN DIAGNOSTIC OR THERAPEUTIC PROCEDURES'.