

C21orf33 Antibody (Center)

Purified Rabbit Polyclonal Antibody (Pab)

Catalog # AP20653c

Product Information

Application	WB, IF, E
Primary Accession	P30042
Reactivity	Human, Rat, Mouse
Host	Rabbit
Clonality	Polyclonal
Isotype	Rabbit IgG
Clone Names	RB49805

Additional Information

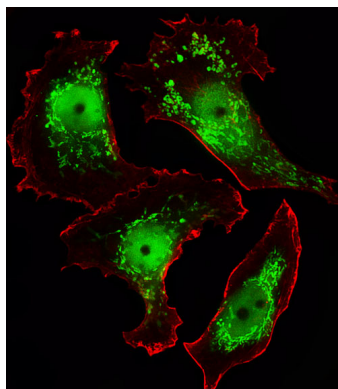
Other Names	ES1 protein homolog, mitochondrial, Protein GT335, Protein KNP-I, C21orf33, HES1, KNPI
Target/Specificity	This C21orf33 antibody is generated from a rabbit immunized with a KLH conjugated synthetic peptide between 91-124 amino acids from the Central region of human C21orf33.
Dilution	WB~~1:1000 IF~~1:25 E~~Use at an assay dependent concentration.
Format	Purified polyclonal antibody supplied in PBS with 0.09% (W/V) sodium azide. This antibody is purified through a protein A column, followed by peptide affinity purification.
Storage	Maintain refrigerated at 2-8°C for up to 2 weeks. For long term storage store at -20°C in small aliquots to prevent freeze-thaw cycles.
Precautions	C21orf33 Antibody (Center) is for research use only and not for use in diagnostic or therapeutic procedures.

Protein Information

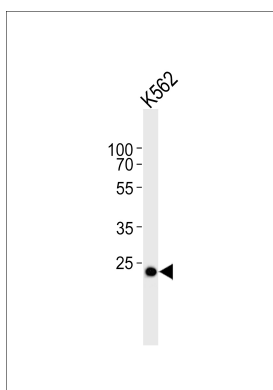
References

Nagamine K.,et al.Biochem. Biophys. Res. Commun. 225:608-616(1996).
Lafreniere R.G.,et al.Genomics 38:264-272(1996).
Scott H.S.,et al.Hum. Genet. 99:616-623(1997).
Hattori M.,et al.Nature 405:311-319(2000).
Nagamine K.,et al.Genomics 42:528-531(1997).

Images



Fluorescent image of MCF-7 cells stained with C21orf33 Antibody (Center)(Cat#AP20653c). AP20653c was diluted at 1:25 dilution. An Alexa Fluor 488-conjugated goat anti-rabbit IgG at 1:400 dilution was used as the secondary antibody (green). Cytoplasmic actin was counterstained with Alexa Fluor® 555 conjugated with Phalloidin (red).



Western blot analysis of lysate from K562 cell line, using C21orf33 Antibody (Center)(Cat. #AP20653c). AP20653c was diluted at 1:1000. A goat anti-rabbit IgG H&L(HRP) at 1:5000 dilution was used as the secondary antibody. Lysate at 35ug.

Please note: All products are 'FOR RESEARCH USE ONLY. NOT FOR USE IN DIAGNOSTIC OR THERAPEUTIC PROCEDURES'.