

CERKL Antibody (N-term)

Purified Rabbit Polyclonal Antibody (Pab)

Catalog # AP20663a

Product Information

Application	WB, E
Primary Accession	Q49MI3
Reactivity	Human
Host	Rabbit
Clonality	Polyclonal
Isotype	Rabbit IgG
Clone Names	RB44210
Calculated MW	62622

Additional Information

Gene ID	375298
Other Names	Ceramide kinase-like protein, CERKL
Target/Specificity	This CERKL antibody is generated from a rabbit immunized with a KLH conjugated synthetic peptide between 94-127 amino acids from the N-terminal region of human CERKL.
Dilution	WB~~1:1000 E~~Use at an assay dependent concentration.
Format	Purified polyclonal antibody supplied in PBS with 0.09% (W/V) sodium azide. This antibody is purified through a protein A column, followed by peptide affinity purification.
Storage	Maintain refrigerated at 2-8°C for up to 2 weeks. For long term storage store at -20°C in small aliquots to prevent freeze-thaw cycles.
Precautions	CERKL Antibody (N-term) is for research use only and not for use in diagnostic or therapeutic procedures.

Protein Information

Name	CERKL
Function	Has no detectable ceramide-kinase activity. Overexpression of CERKL protects cells from apoptosis in oxidative stress conditions.
Cellular Location	Cytoplasm. Nucleus, nucleolus. Note=Enriched in nucleoli. May shuttle between nucleus and cytoplasm. Isoform 5 is not enriched in the nucleoli

Tissue Location

Isoform 1 and isoform 2 are expressed in adult retina, liver and pancreas as well as in fetal brain, lung and kidney. Isoform 3 is expressed in adult retina as well as in fetal lung and liver. Isoform 4 is expressed in adult retina, lung and kidney as well as in fetal lung and liver. Moderately expressed in retina, kidney, lung, testis, trachea, and pancreas. Weakly expressed in brain, placenta and liver.

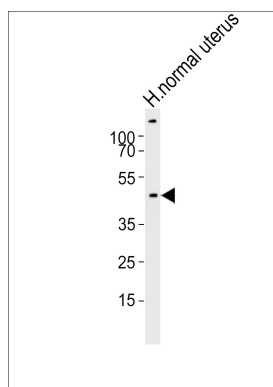
Background

Has no detectable ceramide-kinase activity. Overexpression of CERKL protects cells from apoptosis in oxidative stress conditions.

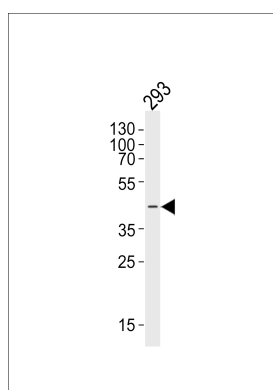
References

Tuson M., et al. *Am. J. Hum. Genet.* 74:128-138(2004).
Bornancin F., et al. *Biochim. Biophys. Acta* 1687:31-43(2005).
Ota T., et al. *Nat. Genet.* 36:40-45(2004).
Hillier L.W., et al. *Nature* 434:724-731(2005).
Rovina P., et al. *Biochim. Biophys. Acta* 1791:1023-1030(2009).

Images



Western blot analysis of lysate from human normal uterus tissue lysate, using CERKL Antibody (N-term)(Cat. #AP20663a). AP20663a was diluted at 1:1000. A goat anti-rabbit IgG H&L(HRP) at 1:10000 dilution was used as the secondary antibody. Lysate at 20ug.



Western blot analysis of lysate from 293 cell line, using CERKL Antibody (N-term)(Cat. #AP20663a). AP20663a was diluted at 1:1000. A goat anti-rabbit IgG H&L(HRP) at 1:5000 dilution was used as the secondary antibody. Lysate at 35ug.

Please note: All products are 'FOR RESEARCH USE ONLY. NOT FOR USE IN DIAGNOSTIC OR THERAPEUTIC PROCEDURES'.