

IDH3G Antibody (N-term)

Purified Rabbit Polyclonal Antibody (Pab)

Catalog # AP20665a

Product Information

Application	WB, E
Primary Accession	P51553
Reactivity	Human, Rat, Mouse
Host	Rabbit
Clonality	Polyclonal
Isotype	Rabbit IgG
Clone Names	RB48822
Calculated MW	42794

Additional Information

Gene ID	3421
Other Names	Isocitrate dehydrogenase [NAD] subunit gamma, mitochondrial, Isocitric dehydrogenase subunit gamma, NAD(+)-specific ICDH subunit gamma, IDH3G
Target/Specificity	This IDH3G antibody is generated from a rabbit immunized with a KLH conjugated synthetic peptide between 50-83 amino acids from the N-terminal region of human IDH3G.
Dilution	WB~~1:1000 E~~Use at an assay dependent concentration.
Format	Purified polyclonal antibody supplied in PBS with 0.09% (W/V) sodium azide. This antibody is purified through a protein A column, followed by peptide affinity purification.
Storage	Maintain refrigerated at 2-8°C for up to 2 weeks. For long term storage store at -20°C in small aliquots to prevent freeze-thaw cycles.
Precautions	IDH3G Antibody (N-term) is for research use only and not for use in diagnostic or therapeutic procedures.

Protein Information

Name	IDH3G
Function	Regulatory subunit which plays a role in the allosteric regulation of the enzyme catalyzing the decarboxylation of isocitrate (ICT) into alpha-ketoglutarate. The heterodimer composed of the alpha (IDH3A) and beta (IDH3B) subunits and the heterodimer composed of the alpha (IDH3A) and gamma (IDH3G) subunits, have considerable basal activity but the full

activity of the heterotetramer (containing two subunits of IDH3A, one of IDH3B and one of IDH3G) requires the assembly and cooperative function of both heterodimers.

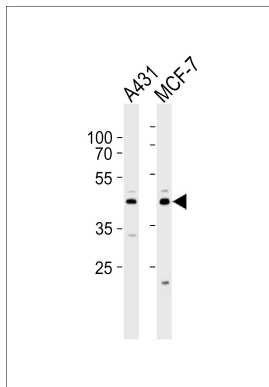
Cellular Location

Mitochondrion.

References

Brenner V.,et al.Genomics 44:8-14(1997).
Kim Y.-O.,et al.J. Biol. Chem. 274:36866-36875(1999).
Ross M.T.,et al.Nature 434:325-337(2005).
Simpson J.C.,et al.EMBO Rep. 1:287-292(2000).
Burkard T.R.,et al.BMC Syst. Biol. 5:17-17(2011).

Images



Western blot analysis of lysates from A431, MCF-7 cell line (from left to right), using IDH3G Antibody (N-term)(Cat. #AP20665a). AP20665a was diluted at 1:1000 at each lane. A goat anti-rabbit IgG H&L(HRP) at 1:5000 dilution was used as the secondary antibody. Lysates at 35ug per lane.

Please note: All products are 'FOR RESEARCH USE ONLY. NOT FOR USE IN DIAGNOSTIC OR THERAPEUTIC PROCEDURES'.