

Serum amyloid P-component(1-203) Antibody (Center)

Purified Rabbit Polyclonal Antibody (Pab)

Catalog # AP20670c

Product Information

Application	WB, IHC-P, E
Primary Accession	P02743
Reactivity	Human, Mouse
Host	Rabbit
Clonality	Polyclonal
Isotype	Rabbit IgG
Clone Names	RB50053
Calculated MW	25387

Additional Information

Gene ID	325
Other Names	Serum amyloid P-component, SAP, 95S alpha-1-glycoprotein, Serum amyloid P-component(1-203), APCS, PTX2
Target/Specificity	This Serum amyloid P-component(1-203) antibody is generated from a rabbit immunized with a KLH conjugated synthetic peptide between 153-187 amino acids from the Central region of human Serum amyloid P-component(1-203).
Dilution	WB~~1:1000 IHC-P~~1:100~500 E~~Use at an assay dependent concentration.
Format	Purified polyclonal antibody supplied in PBS with 0.09% (W/V) sodium azide. This antibody is purified through a protein A column, followed by peptide affinity purification.
Storage	Maintain refrigerated at 2-8°C for up to 2 weeks. For long term storage store at -20°C in small aliquots to prevent freeze-thaw cycles.
Precautions	Serum amyloid P-component(1-203) Antibody (Center) is for research use only and not for use in diagnostic or therapeutic procedures.

Protein Information

Name	APCS
Synonyms	PTX2
Function	Can interact with DNA and histones and may scavenge nuclear material released from damaged circulating cells. May also function as a calcium-dependent lectin.

Cellular Location	Secreted.
Tissue Location	Found in serum and urine.

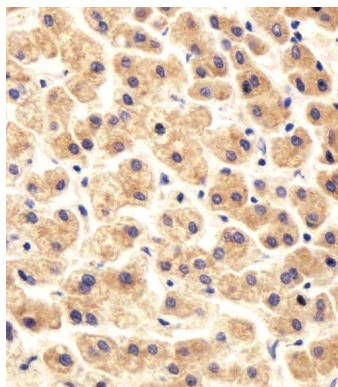
Background

Can interact with DNA and histones and may scavenge nuclear material released from damaged circulating cells. May also function as a calcium-dependent lectin.

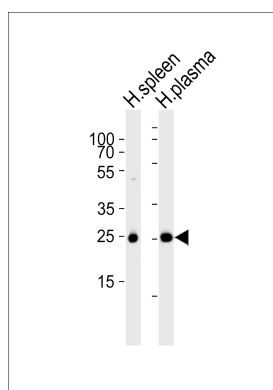
References

Mantzouranis E.C.,et al.J. Biol. Chem. 260:7752-7756(1985).
 Ohnishi S.,et al.J. Biochem. 100:849-858(1986).
 Kalnine N.,et al.Submitted (MAY-2003) to the EMBL/GenBank/DDBJ databases.
 Ebert L.,et al.Submitted (MAY-2004) to the EMBL/GenBank/DDBJ databases.
 Gregory S.G.,et al.Nature 441:315-321(2006).

Images



Immunohistochemical analysis of paraffin-embedded H. liver section using Serum amyloid P-component(1-203) Antibody(Center)(Cat#AP20670c). AP20670c was diluted at 1:25 dilution. A peroxidase-conjugated goat anti-rabbit IgG at 1:400 dilution was used as the secondary antibody, followed by DAB staining.



Western blot analysis of lysates from human spleen and plasma tissue lysate(from left to right), using Serum amyloid P-component(1-203) Antibody (Center)(Cat. #AP20670c). AP20670c was diluted at 1:1000 at each lane. A goat anti-rabbit IgG H&L(HRP) at 1:5000 dilution was used as the secondary antibody. Lysates at 35ug per lane.

Please note: All products are 'FOR RESEARCH USE ONLY. NOT FOR USE IN DIAGNOSTIC OR THERAPEUTIC PROCEDURES'.