

# BCAT2 Antibody (N-term)

Purified Rabbit Polyclonal Antibody (Pab)

Catalog # AP20676a

## Product Information

---

Application	WB, E
Primary Accession	<a href="#">O15382</a>
Reactivity	Human
Host	Rabbit
Clonality	Polyclonal
Isotype	Rabbit IgG
Clone Names	RB48588
Calculated MW	44288

## Additional Information

---

Gene ID	587
Other Names	Branched-chain-amino-acid aminotransferase, mitochondrial, BCAT(m), Placental protein 18, PP18, BCAT2, BCATM, BCT2, ECA40
Target/Specificity	This BCAT2 antibody is generated from a rabbit immunized with a KLH conjugated synthetic peptide between 44-78 amino acids from the N-terminal region of human BCAT2.
Dilution	WB~~1:1000 E~~Use at an assay dependent concentration.
Format	Purified polyclonal antibody supplied in PBS with 0.09% (W/V) sodium azide. This antibody is purified through a protein A column, followed by peptide affinity purification.
Storage	Maintain refrigerated at 2-8°C for up to 2 weeks. For long term storage store at -20°C in small aliquots to prevent freeze-thaw cycles.
Precautions	BCAT2 Antibody (N-term) is for research use only and not for use in diagnostic or therapeutic procedures.

## Protein Information

---

Name	BCAT2
Function	Catalyzes the first reaction in the catabolism of the essential branched chain amino acids leucine, isoleucine, and valine (PubMed: <a href="#">17050531</a> , PubMed: <a href="#">25653144</a> , PubMed: <a href="#">8702755</a> ). May also function as a transporter of branched chain alpha-keto acids (By similarity).

<b>Cellular Location</b>	Mitochondrion {ECO:0000250   UniProtKB:O35854}.
<b>Tissue Location</b>	Ubiquitous..

## Background

---

Catalyzes the first reaction in the catabolism of the essential branched chain amino acids leucine, isoleucine, and valine. May also function as a transporter of branched chain alpha-keto acids.

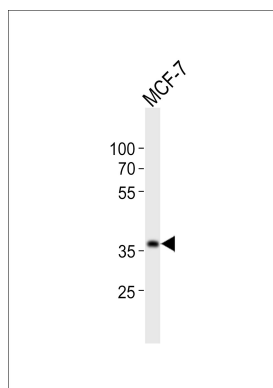
## References

---

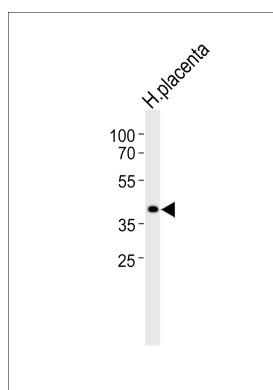
Bledsoe R.K.,et al.Biochim. Biophys. Acta 1339:9-13(1997).  
 Than N.G.,et al.Placenta 22:235-243(2001).  
 Ota T.,et al.Nat. Genet. 36:40-45(2004).  
 Mural R.J.,et al.Submitted (JUL-2005) to the EMBL/GenBank/DDBJ databases.  
 Eden A.,et al.J. Biol. Chem. 271:20242-20245(1996).

## Images

---



Western blot analysis of lysate from MCF-7 cell line, using BCAT2 Antibody (N-term)(Cat. #AP20676a). AP20676a was diluted at 1:1000. A goat anti-rabbit IgG H&L(HRP) at 1:10000 dilution was used as the secondary antibody. Lysate at 20ug.



Western blot analysis of lysate from human placenta tissue lysate, using BCAT2 Antibody (N-term)(Cat. #AP20676a). AP20676a was diluted at 1:1000. A goat anti-rabbit IgG H&L(HRP) at 1:5000 dilution was used as the secondary antibody. Lysate at 35ug.

Please note: All products are 'FOR RESEARCH USE ONLY. NOT FOR USE IN DIAGNOSTIC OR THERAPEUTIC PROCEDURES'.