

FIS1 Antibody (N-term)

Purified Rabbit Polyclonal Antibody (Pab)
Catalog # AP20678a

Product Information

Application	WB, E
Primary Accession	Q9Y3D6
Reactivity	Human, Rat, Mouse
Host	Rabbit
Clonality	Polyclonal
Isotype	Rabbit IgG
Clone Names	RB50047

Additional Information

Other Names	Mitochondrial fission 1 protein, FIS1 homolog, hFis1, Tetratricopeptide repeat protein 11, TPR repeat protein 11, FIS1, TTC11
Target/Specificity	This FIS1 antibody is generated from a rabbit immunized with a KLH conjugated synthetic peptide between 6-40 amino acids from the N-terminal region of human FIS1.
Dilution	WB~~1:1000 E~~Use at an assay dependent concentration.
Format	Purified polyclonal antibody supplied in PBS with 0.09% (W/V) sodium azide. This antibody is purified through a protein A column, followed by peptide affinity purification.
Storage	Maintain refrigerated at 2-8°C for up to 2 weeks. For long term storage store at -20°C in small aliquots to prevent freeze-thaw cycles.
Precautions	FIS1 Antibody (N-term) is for research use only and not for use in diagnostic or therapeutic procedures.

Protein Information

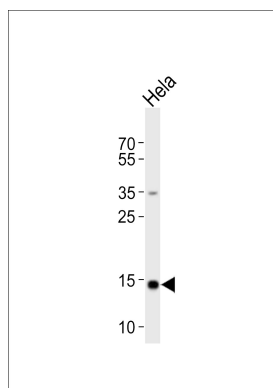
Background

Involved in the fragmentation of the mitochondrial network and its perinuclear clustering. Plays a minor role in the recruitment and association of the fission mediator dynamin-related protein 1 (DNM1L) to the mitochondrial surface and mitochondrial fission. Can induce cytochrome c release from the mitochondrion to the cytosol, ultimately leading to apoptosis. Also mediates peroxisomal fission.

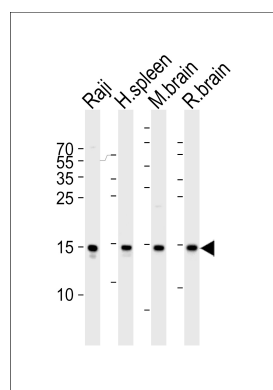
References

Lai C.-H., et al. *Genome Res.* 10:703-713(2000).
Hillier L.W., et al. *Nature* 424:157-164(2003).
Bienvenut W.V., et al. Submitted (JUN-2005) to UniProtKB.
James D.I., et al. *J. Biol. Chem.* 278:36373-36379(2003).
Yoon Y., et al. *Mol. Cell. Biol.* 23:5409-5420(2003).

Images



Western blot analysis of lysate from HeLa cell line, using FIS1 Antibody (N-term)(Cat. #AP20678a). AP20678a was diluted at 1:1000. A goat anti-rabbit IgG H&L(HRP) at 1:10000 dilution was used as the secondary antibody. Lysate at 20ug.



Western blot analysis of lysates from Raji cell line, human spleen, mouse brain and rat brain tissue lysate(from left to right), using FIS1 Antibody (N-term)(Cat. #AP20678a). AP20678a was diluted at 1:1000 at each lane. A goat anti-rabbit IgG H&L(HRP) at 1:5000 dilution was used as the secondary antibody. Lysates at 35ug per lane.

Please note: All products are 'FOR RESEARCH USE ONLY. NOT FOR USE IN DIAGNOSTIC OR THERAPEUTIC PROCEDURES'.