

SAMM50 Antibody (Center)

Purified Rabbit Polyclonal Antibody (Pab)

Catalog # AP20683c

Product Information

Application	WB, E
Primary Accession	Q9Y512
Reactivity	Human, Rat, Mouse
Host	Rabbit
Clonality	Polyclonal
Isotype	Rabbit IgG
Clone Names	RB50095
Calculated MW	51976

Additional Information

Gene ID	25813
Other Names	Sorting and assembly machinery component 50 homolog, Transformation-related gene 3 protein, TRG-3, SAMM50, SAM50
Target/Specificity	This SAMM50 antibody is generated from a rabbit immunized with a KLH conjugated synthetic peptide between 346-380 amino acids from the Central region of human SAMM50.
Dilution	WB~~1:1000 E~~Use at an assay dependent concentration.
Format	Purified polyclonal antibody supplied in PBS with 0.09% (W/V) sodium azide. This antibody is purified through a protein A column, followed by peptide affinity purification.
Storage	Maintain refrigerated at 2-8°C for up to 2 weeks. For long term storage store at -20°C in small aliquots to prevent freeze-thaw cycles.
Precautions	SAMM50 Antibody (Center) is for research use only and not for use in diagnostic or therapeutic procedures.

Protein Information

Name	SAMM50
Synonyms	SAM50
Function	Plays a crucial role in the maintenance of the structure of mitochondrial cristae and the proper assembly of the mitochondrial respiratory chain complexes (PubMed: 22252321 , PubMed: 25781180). Required for the

assembly of TOMM40 into the TOM complex (PubMed:[15644312](#)).

Cellular Location

Mitochondrion outer membrane; Multi-pass membrane protein. Cytoplasm {ECO:0000250|UniProtKB:Q6AXV4}. Mitochondrion

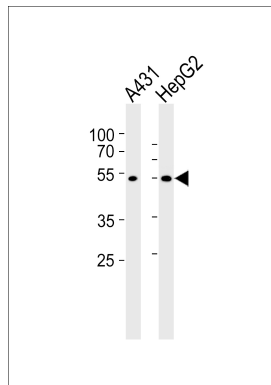
Background

May be required for the assembly pathway of mitochondrial outer membrane proteins (By similarity).

References

Lai C.-H.,et al.Genome Res. 10:703-713(2000).
Kim J.W.,et al.Submitted (DEC-2002) to the EMBL/GenBank/DDBJ databases.
Ota T.,et al.Nat. Genet. 36:40-45(2004).
Collins J.E.,et al.Genome Biol. 5:R84.1-R84.11(2004).
Suzuki Y.,et al.Submitted (APR-2005) to the EMBL/GenBank/DDBJ databases.

Images



Western blot analysis of lysates from A431, HepG2 cell line (from left to right), using SAMM50 Antibody (Center)(Cat. #AP20683c). AP20683c was diluted at 1:1000 at each lane. A goat anti-rabbit IgG H&L(HRP) at 1:5000 dilution was used as the secondary antibody. Lysates at 35ug per lane.

Please note: All products are 'FOR RESEARCH USE ONLY. NOT FOR USE IN DIAGNOSTIC OR THERAPEUTIC PROCEDURES'.