

ECHDC3 Antibody (N-term)

Purified Rabbit Polyclonal Antibody (Pab)

Catalog # AP20684a

Product Information

Application	WB, IHC-P, E
Primary Accession	Q96DC8
Reactivity	Human
Host	Rabbit
Clonality	Polyclonal
Isotype	Rabbit IgG
Clone Names	RB49945
Calculated MW	32634

Additional Information

Gene ID	79746
Other Names	Enoyl-CoA hydratase domain-containing protein 3, mitochondrial, ECHDC3
Target/Specificity	This ECHDC3 antibody is generated from a rabbit immunized with a KLH conjugated synthetic peptide between 31-66 amino acids from the N-terminal region of human ECHDC3.
Dilution	WB~~1:1000 IHC-P~~1:100~500 E~~Use at an assay dependent concentration.
Format	Purified polyclonal antibody supplied in PBS with 0.09% (W/V) sodium azide. This antibody is purified through a protein A column, followed by peptide affinity purification.
Storage	Maintain refrigerated at 2-8°C for up to 2 weeks. For long term storage store at -20°C in small aliquots to prevent freeze-thaw cycles.
Precautions	ECHDC3 Antibody (N-term) is for research use only and not for use in diagnostic or therapeutic procedures.

Protein Information

Name	ECHDC3 (HGNC:23489)
Function	May play a role in fatty acid biosynthesis and insulin sensitivity.
Cellular Location	Mitochondrion.
Tissue Location	Expressed in adipocytes (PubMed:31010960). Expressed in blood cells, with higher expression in patients with low coronary lesions (PubMed:27586541).

References

Ota T.,et al.Nat. Genet. 36:40-45(2004).

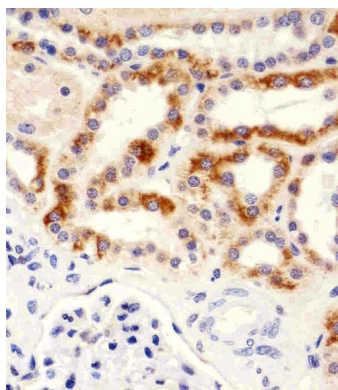
Wan D.,et al.Proc. Natl. Acad. Sci. U.S.A. 101:15724-15729(2004).

Suzuki Y.,et al.Submitted (APR-2005) to the EMBL/GenBank/DDBJ databases.

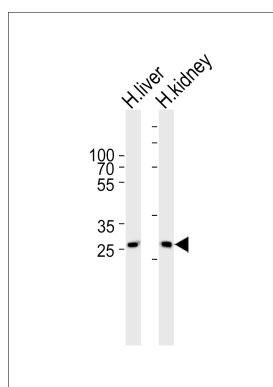
Deloukas P.,et al.Nature 429:375-381(2004).

Mural R.J.,et al.Submitted (SEP-2005) to the EMBL/GenBank/DDBJ databases.

Images



Immunohistochemical analysis of paraffin-embedded H. kidney section using ECHDC3 Antibody (N-term)(Cat#AP20684a). AP20684a was diluted at 1:25 dilution. A peroxidase-conjugated goat anti-rabbit IgG at 1:400 dilution was used as the secondary antibody, followed by DAB staining.



Western blot analysis of lysates from human liver and kidney tissue lysate (from left to right), using ECHDC3 Antibody (N-term)(Cat. #AP20684a). AP20684a was diluted at 1:1000 at each lane. A goat anti-rabbit IgG H&L(HRP) at 1:5000 dilution was used as the secondary antibody. Lysates at 35ug per lane.

Please note: All products are 'FOR RESEARCH USE ONLY. NOT FOR USE IN DIAGNOSTIC OR THERAPEUTIC PROCEDURES'.