

STX1B Antibody (Center)

Purified Rabbit Polyclonal Antibody (Pab)

Catalog # AP20686c

Product Information

Application	WB, E
Primary Accession	P61266
Reactivity	Human, Rat, Mouse
Host	Rabbit
Clonality	Polyclonal
Isotype	Rabbit IgG
Clone Names	RB50723
Calculated MW	33245

Additional Information

Gene ID	112755
Other Names	Syntaxin-1B, Syntaxin-1B1, Syntaxin-1B2, STX1B, STX1B1, STX1B2
Target/Specificity	This STX1B antibody is generated from a rabbit immunized with a KLH conjugated synthetic peptide between 170-203 amino acids from the Central region of human STX1B.
Dilution	WB~~1:1000 E~~Use at an assay dependent concentration.
Format	Purified polyclonal antibody supplied in PBS with 0.09% (W/V) sodium azide. This antibody is purified through a protein A column, followed by peptide affinity purification.
Storage	Maintain refrigerated at 2-8°C for up to 2 weeks. For long term storage store at -20°C in small aliquots to prevent freeze-thaw cycles.
Precautions	STX1B Antibody (Center) is for research use only and not for use in diagnostic or therapeutic procedures.

Protein Information

Name	STX1B
Synonyms	STX1B1, STX1B2
Function	Potentially involved in docking of synaptic vesicles at presynaptic active zones. May mediate Ca(2+)-regulation of exocytosis acrosomal reaction in sperm (By similarity).

Background

Potentially involved in docking of synaptic vesicles at presynaptic active zones. May mediate Ca(2+)-regulation of exocytosis acrosomal reaction in sperm (By similarity).

References

Pereira S.,et al.Gene 423:160-171(2008).

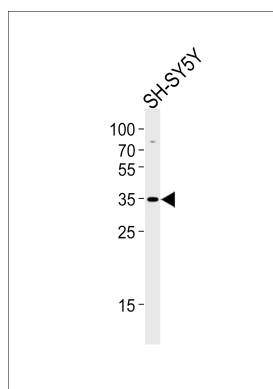
Fujiwara T.,et al.Submitted (AUG-1994) to the EMBL/GenBank/DDBJ databases.

Gastaldi M.,et al.Submitted (MAR-2001) to the EMBL/GenBank/DDBJ databases.

Martin J.,et al.Nature 432:988-994(2004).

Rigbolt K.T.,et al.Sci. Signal. 4:RS3-RS3(2011).

Images



Western blot analysis of lysate from SH-SY5Y cell line, using STX1B Antibody (Center)(Cat. #AP20686c). AP20686c was diluted at 1:1000. A goat anti-rabbit IgG H&L(HRP) at 1:5000 dilution was used as the secondary antibody. Lysate at 35ug.

Please note: All products are 'FOR RESEARCH USE ONLY. NOT FOR USE IN DIAGNOSTIC OR THERAPEUTIC PROCEDURES'.