

TMEM239 Antibody (N-term)

Purified Rabbit Polyclonal Antibody (Pab)

Catalog # AP20694a

Product Information

Application	WB, E
Primary Accession	Q8WW34
Reactivity	Human, Mouse
Host	Rabbit
Clonality	Polyclonal
Isotype	Rabbit IgG
Clone Names	RB49937
Calculated MW	21842

Additional Information

Gene ID	100288797
Other Names	Transmembrane protein 239, TMEM239
Target/Specificity	This TMEM239 antibody is generated from a rabbit immunized with a KLH conjugated synthetic peptide between 5-38 amino acids from the N-terminal region of human TMEM239.
Dilution	WB~~1:1000 E~~Use at an assay dependent concentration.
Format	Purified polyclonal antibody supplied in PBS with 0.09% (W/V) sodium azide. This antibody is purified through a protein A column, followed by peptide affinity purification.
Storage	Maintain refrigerated at 2-8°C for up to 2 weeks. For long term storage store at -20°C in small aliquots to prevent freeze-thaw cycles.
Precautions	TMEM239 Antibody (N-term) is for research use only and not for use in diagnostic or therapeutic procedures.

Protein Information

Name	TMEM239
Cellular Location	Membrane; Multi-pass membrane protein

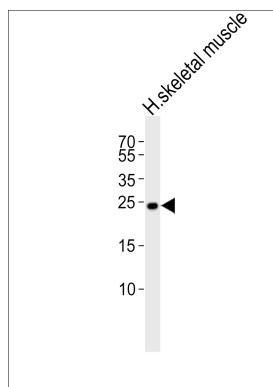
References

Ota T.,et al.Nat. Genet. 36:40-45(2004).

Deloukas P.,et al.Nature 414:865-871(2001).

Mural R.J.,et al.Submitted (JUL-2005) to the EMBL/GenBank/DDBJ databases.

Images



Western blot analysis of lysate from human skeletal muscle tissue lysate, using TMEM239 Antibody (N-term)(Cat. #AP20694a). AP20694a was diluted at 1:1000. A goat anti-rabbit IgG H&L(HRP) at 1:5000 dilution was used as the secondary antibody. Lysate at 35ug.

Please note: All products are 'FOR RESEARCH USE ONLY. NOT FOR USE IN DIAGNOSTIC OR THERAPEUTIC PROCEDURES'.