

MME Antibody (Center)

Purified Rabbit Polyclonal Antibody (Pab)

Catalog # AP20698c

Product Information

Application	WB, IHC-P, E
Primary Accession	P08473
Reactivity	Human, Rat, Mouse
Host	Rabbit
Clonality	Polyclonal
Isotype	Rabbit IgG
Clone Names	RB43677
Calculated MW	85514

Additional Information

Gene ID	4311
Other Names	Neprilysin, Atriopeptidase, Common acute lymphocytic leukemia antigen, CALLA, Enkephalinase, Neutral endopeptidase 2411, NEP, Neutral endopeptidase, Skin fibroblast elastase, SFE, CD10, MME, EPN
Target/Specificity	This MME antibody is generated from a rabbit immunized with a KLH conjugated synthetic peptide between 492-525 amino acids from the Central region of human MME.
Dilution	WB~~1:1000 IHC-P~~1:100~500 E~~Use at an assay dependent concentration.
Format	Purified polyclonal antibody supplied in PBS with 0.09% (W/V) sodium azide. This antibody is purified through a protein A column, followed by peptide affinity purification.
Storage	Maintain refrigerated at 2-8°C for up to 2 weeks. For long term storage store at -20°C in small aliquots to prevent freeze-thaw cycles.
Precautions	MME Antibody (Center) is for research use only and not for use in diagnostic or therapeutic procedures.

Protein Information

Name	MME {ECO:0000303 PubMed:27588448, ECO:0000312 HGNC:HGNC:7154}
Function	Thermolysin-like specificity, but is almost confined on acting on polypeptides of up to 30 amino acids (PubMed: 15283675 , PubMed: 6208535 , PubMed: 6349683 , PubMed: 8168535). Biologically important in the destruction of opioid peptides such as Met- and Leu-enkephalins by cleavage

of a Gly-Phe bond (PubMed:[17101991](#), PubMed:[6349683](#)). Catalyzes cleavage of bradykinin, substance P and neurotensin peptides (PubMed:[6208535](#)). Able to cleave angiotensin-1, angiotensin-2 and angiotensin 1-9 (PubMed:[15283675](#), PubMed:[6349683](#)). Involved in the degradation of atrial natriuretic factor (ANF) and brain natriuretic factor (BNP(1-32)) (PubMed:[16254193](#), PubMed:[2531377](#), PubMed:[2972276](#)). Displays UV-inducible elastase activity toward skin preelastic and elastic fibers (PubMed:[20876573](#)).

Cellular Location

Cell membrane; Single-pass type II membrane protein

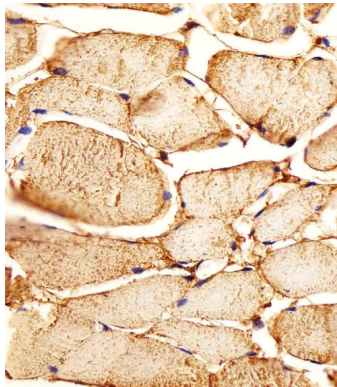
Background

Thermolysin-like specificity, but is almost confined on acting on polypeptides of up to 30 amino acids. Biologically important in the destruction of opioid peptides such as Met- and Leu-enkephalins by cleavage of a Gly-Phe bond. Able to cleave angiotensin-1, angiotensin-2 and angiotensin 1-9. Involved in the degradation of atrial natriuretic factor (ANF). Displays UV- inducible elastase activity toward skin preelastic and elastic fibers.

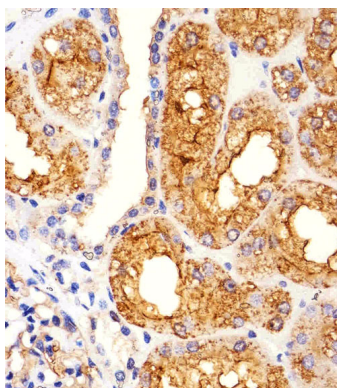
References

Letarte M.,et al.J. Exp. Med. 168:1247-1253(1988).
Shipp M.A.,et al.Proc. Natl. Acad. Sci. U.S.A. 85:4819-4823(1988).
D'Adamio L.,et al.Proc. Natl. Acad. Sci. U.S.A. 86:7103-7107(1989).
Ota T.,et al.Nat. Genet. 36:40-45(2004).
Mural R.J.,et al.Submitted (SEP-2005) to the EMBL/GenBank/DDBJ databases.

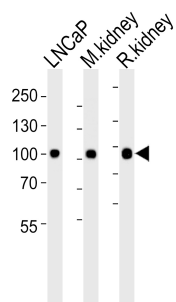
Images



Immunohistochemical analysis of paraffin-embedded H. skeletal muscle section using MME Antibody (Center)(Cat#AP20698c). AP20698c was diluted at 1:25 dilution. A peroxidase-conjugated goat anti-rabbit IgG at 1:400 dilution was used as the secondary antibody, followed by DAB staining.



Immunohistochemical analysis of paraffin-embedded H. kidney section using MME Antibody (Center)(Cat#AP20698c). AP20698c was diluted at 1:25 dilution. A peroxidase-conjugated goat anti-rabbit IgG at 1:400 dilution was used as the secondary antibody, followed by DAB staining.



Western blot analysis of lysates from LNCaP cell line , mouse kidney, rat kidney tissue lysate(from left to right), using MME Antibody (Center)(Cat. #AP20698c). AP20698c was diluted at 1:1000 at each lane. A goat anti-rabbit IgG H&L(HRP) at 1:5000 dilution was used as the secondary antibody. Lysates at 35ug per lane.

Please note: All products are 'FOR RESEARCH USE ONLY. NOT FOR USE IN DIAGNOSTIC OR THERAPEUTIC PROCEDURES'.