

(DANRE) lcp1 Antibody (N-term)

Purified Rabbit Polyclonal Antibody (Pab)

Catalog # AP20708a

Product Information

Application	WB, E
Primary Accession	Q6P698
Reactivity	Zebrafish
Host	Rabbit
Clonality	Polyclonal
Isotype	Rabbit IgG
Clone Names	RB46580
Calculated MW	69900

Additional Information

Other Names	Plastin-2, L-plastin, Lymphocyte cytosolic plastin 1, lcp1 {ECO:0000312 EMBL:AAH623811}, pls2
Target/Specificity	This (DANRE) lcp1 antibody is generated from a rabbit immunized with a KLH conjugated synthetic peptide between 138-172 amino acids from the N-terminal region of human (DANRE) lcp1.
Dilution	WB~~1:1000 E~~Use at an assay dependent concentration.
Format	Purified polyclonal antibody supplied in PBS with 0.09% (W/V) sodium azide. This antibody is purified through a protein A column, followed by peptide affinity purification.
Storage	Maintain refrigerated at 2-8°C for up to 2 weeks. For long term storage store at -20°C in small aliquots to prevent freeze-thaw cycles.
Precautions	(DANRE) lcp1 Antibody (N-term) is for research use only and not for use in diagnostic or therapeutic procedures.

Protein Information

Name	lcp1 {ECO:0000312 EMBL:AAH62381.1}
Synonyms	pls2
Function	Actin-binding protein. Plays a role in the activation of T- cells (By similarity).
Cellular Location	Cytoplasm, cytoskeleton {ECO:0000250 UniProtKB:P13796}. Cell junction {ECO:0000250 UniProtKB:P13796}. Cell projection {ECO:0000250 UniProtKB:P13796}. Cell projection, ruffle membrane

{ECO:0000250|UniProtKB:P13796, ECO:0000250|UniProtKB:Q61233};
Peripheral membrane protein {ECO:0000250|UniProtKB:Q61233};
Cytoplasmic side {ECO:0000250|UniProtKB:Q61233}

Tissue Location

Expressed by macrophages (at protein level).

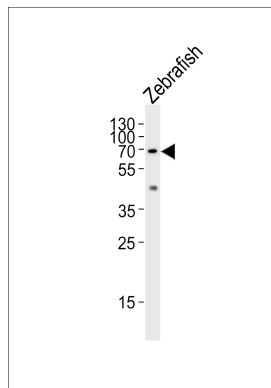
Background

Actin-binding protein. Plays a role in the activation of T-cells (By similarity).

References

Herbomel P.,et al.Development 126:3735-3745(1999).

Images



Western blot analysis of lysate from Zebrafish tissue lysate, using (DANRE) lcp1 Antibody (N-term)(Cat. #AP20708a). AP20708a was diluted at 1:1000. A goat anti-rabbit IgG H&L(HRP) at 1:5000 dilution was used as the secondary antibody. Lysate at 35ug.

Please note: All products are 'FOR RESEARCH USE ONLY. NOT FOR USE IN DIAGNOSTIC OR THERAPEUTIC PROCEDURES'.