

TIMM50 Antibody (N-term)

Purified Rabbit Polyclonal Antibody (Pab)

Catalog # AP20709a

Product Information

Application	WB, E
Primary Accession	Q3ZCQ8
Reactivity	Human
Host	Rabbit
Clonality	Polyclonal
Isotype	Rabbit IgG
Clone Names	RB49868
Calculated MW	39646

Additional Information

Gene ID	92609
Other Names	Mitochondrial import inner membrane translocase subunit TIM50, TIMM50, TIM50
Target/Specificity	This TIMM50 antibody is generated from a rabbit immunized with a KLH conjugated synthetic peptide between 25-56 amino acids from the N-terminal region of human TIMM50.
Dilution	WB~~1:1000 E~~Use at an assay dependent concentration.
Format	Purified polyclonal antibody supplied in PBS with 0.09% (W/V) sodium azide. This antibody is purified through a protein A column, followed by peptide affinity purification.
Storage	Maintain refrigerated at 2-8°C for up to 2 weeks. For long term storage store at -20°C in small aliquots to prevent freeze-thaw cycles.
Precautions	TIMM50 Antibody (N-term) is for research use only and not for use in diagnostic or therapeutic procedures.

Protein Information

Name	TIMM50
Synonyms	TIM50
Function	Essential component of the TIM23 complex, a complex that mediates the translocation of transit peptide-containing proteins across the mitochondrial inner membrane (PubMed: 30190335 , PubMed: 38828998). Has some

phosphatase activity in vitro; however such activity may not be relevant in vivo.

Cellular Location

Mitochondrion inner membrane; Single-pass membrane protein

Tissue Location

Widely expressed. Expressed at higher level in brain, kidney and liver (at protein level)

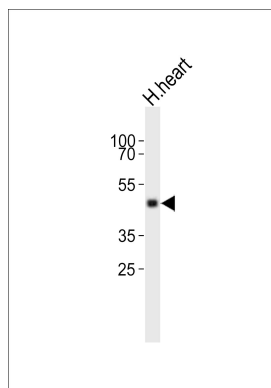
Background

Essential component of the TIM23 complex, a complex that mediates the translocation of transit peptide-containing proteins across the mitochondrial inner membrane. Has some phosphatase activity in vitro; however such activity may not be relevant in vivo. Isoform 2 may participate in the release of snRNPs and SMN from the Cajal body.

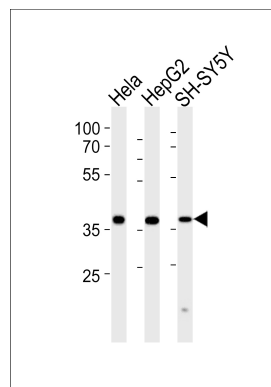
References

Guo Y.,et al.J. Biol. Chem. 279:24813-24825(2004).
Zheng H.,et al.Submitted (OCT-2003) to the EMBL/GenBank/DDBJ databases.
Grimwood J.,et al.Nature 428:529-535(2004).
Zhang C.,et al.Submitted (FEB-1999) to the EMBL/GenBank/DDBJ databases.
Bienvenut W.V.,et al.Submitted (JUN-2005) to UniProtKB.

Images



Western blot analysis of lysate from human heart tissue lysate, using TIMM50 Antibody (N-term)(Cat. #AP20709a). AP20709a was diluted at 1:1000. A goat anti-rabbit IgG H&L(HRP) at 1:10000 dilution was used as the secondary antibody. Lysate at 20ug.



Western blot analysis of lysates from Hela, HepG2, SH-SY5Y cell line (from left to right), using TIMM50 Antibody (N-term)(Cat. #AP20709a). AP20709a was diluted at 1:1000 at each lane. A goat anti-rabbit IgG H&L(HRP) at 1:5000 dilution was used as the secondary antibody. Lysates at 35ug per lane.

Please note: All products are 'FOR RESEARCH USE ONLY. NOT FOR USE IN DIAGNOSTIC OR THERAPEUTIC PROCEDURES'.