

# SPANXA1 Antibody (N-term)

Purified Rabbit Polyclonal Antibody (Pab)

Catalog # AP20710a

## Product Information

---

Application	WB, E
Primary Accession	<a href="#">Q9NS26</a>
Reactivity	Human
Host	Rabbit
Clonality	Polyclonal
Isotype	Rabbit IgG
Clone Names	RB47864
Calculated MW	11038

## Additional Information

---

Gene ID	30014;728712
Other Names	Sperm protein associated with the nucleus on the X chromosome A, Cancer/testis antigen 111, CT111, Nuclear-associated protein SPAN-Xa, SPAN-X, SPANX-A, SPANX family member A, SPANXA1, SPANXA
Target/Specificity	This SPANXA1 antibody is generated from a rabbit immunized with a KLH conjugated synthetic peptide between 2-36 amino acids from the N-terminal region of human SPANXA1.
Dilution	WB~~1:1000 E~~Use at an assay dependent concentration.
Format	Purified polyclonal antibody supplied in PBS with 0.09% (W/V) sodium azide. This antibody is purified through a protein A column, followed by peptide affinity purification.
Storage	Maintain refrigerated at 2-8°C for up to 2 weeks. For long term storage store at -20°C in small aliquots to prevent freeze-thaw cycles.
Precautions	SPANXA1 Antibody (N-term) is for research use only and not for use in diagnostic or therapeutic procedures.

## Protein Information

---

Name	SPANXA1 ( <a href="#">HGNC:11218</a> )
Synonyms	SPANXA
Cellular Location	Cytoplasm. Nucleus. Note=Associated with nuclear craters

## Tissue Location

Detected in testis and sperm.

## References

---

Westbrook V.A.,et al.Biol. Reprod. 63:469-481(2000).

Zendman A.J.,et al.Gene 309:125-133(2003).

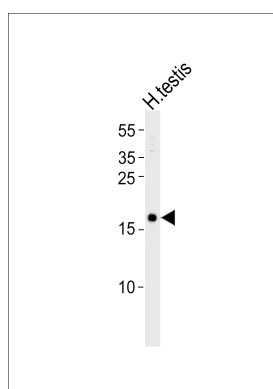
Kouprina N.,et al.Genome Res. 15:1477-1486(2005).

Larionov V.,et al.Submitted (NOV-2006) to the EMBL/GenBank/DBJ databases.

Ross M.T.,et al.Nature 434:325-337(2005).

## Images

---



Western blot analysis of lysate from human testis tissue lysate, using SPANXA1 Antibody (N-term)(Cat. #AP20710a). AP20710a was diluted at 1:1000. A goat anti-rabbit IgG H&L(HRP) at 1:5000 dilution was used as the secondary antibody. Lysate at 35ug.

Please note: All products are 'FOR RESEARCH USE ONLY. NOT FOR USE IN DIAGNOSTIC OR THERAPEUTIC PROCEDURES'.