

IMMT Antibody (Center)

Purified Rabbit Polyclonal Antibody (Pab)

Catalog # AP20716c

Product Information

Application	WB, E
Primary Accession	Q16891
Reactivity	Human
Host	Rabbit
Clonality	Polyclonal
Isotype	Rabbit IgG
Clone Names	RB49836
Calculated MW	83678

Additional Information

Gene ID	10989
Other Names	MICOS complex subunit MIC60, Cell proliferation-inducing gene 4/52 protein, Mitochondrial inner membrane protein, Mitofilin, p87/89, IMMT, HMP, MIC60, MINOS2
Target/Specificity	This IMMT antibody is generated from a rabbit immunized with a KLH conjugated synthetic peptide between 170-203 amino acids from the Central region of human IMMT.
Dilution	WB~~1:1000 E~~Use at an assay dependent concentration.
Format	Purified polyclonal antibody supplied in PBS with 0.09% (W/V) sodium azide. This antibody is purified through a protein A column, followed by peptide affinity purification.
Storage	Maintain refrigerated at 2-8°C for up to 2 weeks. For long term storage store at -20°C in small aliquots to prevent freeze-thaw cycles.
Precautions	IMMT Antibody (Center) is for research use only and not for use in diagnostic or therapeutic procedures.

Protein Information

Name	IMMT
Synonyms	HMP, MIC60, MINOS2
Function	Component of the MICOS complex, a large protein complex of the mitochondrial inner membrane that plays crucial roles in the maintenance of

crista junctions, inner membrane architecture, and formation of contact sites to the outer membrane (PubMed:[22114354](#), PubMed:[25781180](#), PubMed:[32567732](#), PubMed:[33130824](#)). Plays an important role in the maintenance of the MICOS complex stability and the mitochondrial cristae morphology (PubMed:[22114354](#), PubMed:[25781180](#), PubMed:[32567732](#), PubMed:[33130824](#)).

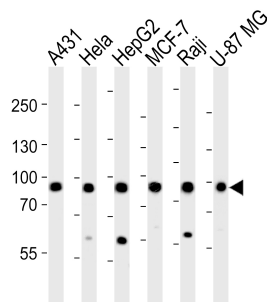
Cellular Location

Mitochondrion inner membrane; Single-pass membrane protein.
Mitochondrion

References

Icho T.,et al.Gene 144:301-306(1994).
Gieffers C.,et al.Exp. Cell Res. 232:395-399(1997).
Ebert L.,et al.Submitted (JUN-2004) to the EMBL/GenBank/DDBJ databases.
Ota T.,et al.Nat. Genet. 36:40-45(2004).
Kim J.W.,et al.Submitted (FEB-2005) to the EMBL/GenBank/DDBJ databases.

Images



Western blot analysis of lysates from A431, HeLa, HepG2, MCF-7, Raji, U-87 MG cell line (from left to right), using IMMT Antibody (Center)(Cat. #AP20716c). AP20716c was diluted at 1:1000 at each lane. A goat anti-rabbit IgG H&L(HRP) at 1:5000 dilution was used as the secondary antibody. Lysates at 35ug per lane.

Please note: All products are 'FOR RESEARCH USE ONLY. NOT FOR USE IN DIAGNOSTIC OR THERAPEUTIC PROCEDURES'.