

TSPY2 Antibody (Center)

Purified Rabbit Polyclonal Antibody (Pab)

Catalog # AP20718c

Product Information

Application	WB, E
Primary Accession	A6NKD2
Reactivity	Human
Host	Rabbit
Clonality	Polyclonal
Isotype	Rabbit IgG
Clone Names	RB49775
Calculated MW	35100

Additional Information

Gene ID	64591
Other Names	Testis-specific Y-encoded protein 2, Testis-specific Y-encoded protein Q1, TSPY2, TSPYQ1
Target/Specificity	This TSPY2 antibody is generated from a rabbit immunized with a KLH conjugated synthetic peptide between 86-120 amino acids from the Central region of human TSPY2.
Dilution	WB~~1:1000 E~~Use at an assay dependent concentration.
Format	Purified polyclonal antibody supplied in PBS with 0.09% (W/V) sodium azide. This antibody is purified through a protein A column, followed by peptide affinity purification.
Storage	Maintain refrigerated at 2-8°C for up to 2 weeks. For long term storage store at -20°C in small aliquots to prevent freeze-thaw cycles.
Precautions	TSPY2 Antibody (Center) is for research use only and not for use in diagnostic or therapeutic procedures.

Protein Information

Name	TSPY2
Synonyms	TSPYQ1
Function	May be involved in sperm differentiation and proliferation.
Cellular Location	Cytoplasm {ECO:0000250 UniProtKB:Q01534}. Nucleus

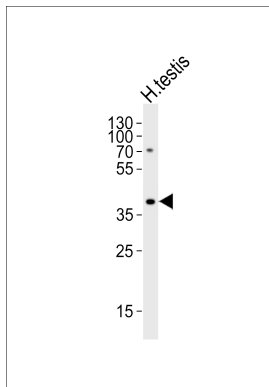
Background

Unknown. May be involved in sperm differentiation and proliferation (By similarity).

References

Skaletsky H.,et al.Nature 423:825-837(2003).

Images



Western blot analysis of lysate from human testis tissue lysate, using TSPY2 Antibody (Center)(Cat. #AP20718c). AP20718c was diluted at 1:1000. A goat anti-rabbit IgG H&L(HRP) at 1:5000 dilution was used as the secondary antibody. Lysate at 35ug.

Please note: All products are 'FOR RESEARCH USE ONLY. NOT FOR USE IN DIAGNOSTIC OR THERAPEUTIC PROCEDURES'.