

GSN Antibody (N-term)

Purified Rabbit Polyclonal Antibody (Pab)

Catalog # AP20726a

Product Information

Application	WB, E
Primary Accession	P06396
Reactivity	Human
Host	Rabbit
Clonality	Polyclonal
Isotype	Rabbit IgG
Clone Names	RB49797
Calculated MW	85698

Additional Information

Gene ID	2934
Other Names	Gelsolin, AGEL, Actin-depolymerizing factor, ADF, Brevin, GSN
Target/Specificity	This GSN antibody is generated from a rabbit immunized with a KLH conjugated synthetic peptide between 36-70 amino acids from the N-terminal region of human GSN.
Dilution	WB~~1:1000 E~~Use at an assay dependent concentration.
Format	Purified polyclonal antibody supplied in PBS with 0.09% (W/V) sodium azide. This antibody is purified through a protein A column, followed by peptide affinity purification.
Storage	Maintain refrigerated at 2-8°C for up to 2 weeks. For long term storage store at -20°C in small aliquots to prevent freeze-thaw cycles.
Precautions	GSN Antibody (N-term) is for research use only and not for use in diagnostic or therapeutic procedures.

Protein Information

Name	GSN
Function	Calcium-regulated, actin-modulating protein that binds to the plus (or barbed) ends of actin monomers or filaments, preventing monomer exchange (end-blocking or capping). It can promote the assembly of monomers into filaments (nucleation) as well as sever filaments already formed (PubMed: 19666512). Plays a role in ciliogenesis (PubMed: 20393563).

Cellular Location	[Isoform 2]: Cytoplasm, cytoskeleton.
Tissue Location	Phagocytic cells, platelets, fibroblasts, nonmuscle cells, smooth and skeletal muscle cells

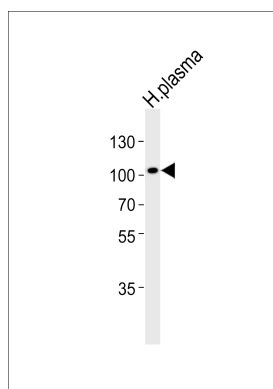
Background

Calcium-regulated, actin-modulating protein that binds to the plus (or barbed) ends of actin monomers or filaments, preventing monomer exchange (end-blocking or capping). It can promote the assembly of monomers into filaments (nucleation) as well as sever filaments already formed. Plays a role in ciliogenesis.

References

Kwiatkowski D.J.,et al.Nature 323:455-458(1986).
Ota T.,et al.Nat. Genet. 36:40-45(2004).
Humphray S.J.,et al.Nature 429:369-374(2004).
Mural R.J.,et al.Submitted (JUL-2005) to the EMBL/GenBank/DDBJ databases.
Gevaert K.,et al.Nat. Biotechnol. 21:566-569(2003).

Images



Western blot analysis of lysate from human plasma tissue lysate, using GSN Antibody (N-term)(Cat. #AP20726a). AP20726a was diluted at 1:1000. A goat anti-rabbit IgG H&L(HRP) at 1:5000 dilution was used as the secondary antibody. Lysate at 35ug.

Please note: All products are 'FOR RESEARCH USE ONLY. NOT FOR USE IN DIAGNOSTIC OR THERAPEUTIC PROCEDURES'.