

CPLX2 Antibody (Center)

Purified Rabbit Polyclonal Antibody (Pab)
Catalog # AP20735c

Product Information

Application	WB, E
Primary Accession	Q6PUV4
Reactivity	Human, Rat, Mouse
Host	Rabbit
Clonality	Polyclonal
Isotype	Rabbit IgG
Clone Names	RB44455
Calculated MW	15394

Additional Information

Gene ID	10814
Other Names	Complexin-2, Complexin II, CPX II, Synaphin-1, CPLX2
Target/Specificity	This CPLX2 antibody is generated from a rabbit immunized with a KLH conjugated synthetic peptide between 51-83 amino acids from the Central region of human CPLX2.
Dilution	WB~~1:1000 E~~Use at an assay dependent concentration.
Format	Purified polyclonal antibody supplied in PBS with 0.09% (W/V) sodium azide. This antibody is purified through a protein A column, followed by peptide affinity purification.
Storage	Maintain refrigerated at 2-8°C for up to 2 weeks. For long term storage store at -20°C in small aliquots to prevent freeze-thaw cycles.
Precautions	CPLX2 Antibody (Center) is for research use only and not for use in diagnostic or therapeutic procedures.

Protein Information

Name	CPLX2
Function	Negatively regulates the formation of synaptic vesicle clustering at active zone to the presynaptic membrane in postmitotic neurons. Positively regulates a late step in exocytosis of various cytoplasmic vesicles, such as synaptic vesicles and other secretory vesicles. Also involved in mast cell exocytosis (By similarity).

Cellular Location	Cytoplasm, cytosol {ECO:0000250 UniProtKB:P84087}. Presynapse {ECO:0000250 UniProtKB:P84087}. Nucleus {ECO:0000250 UniProtKB:P84087} Perikaryon {ECO:0000250 UniProtKB:P84087}. Note=Translocated from the perikaryon to the presynaptic terminals during maturation of neuronal cells. In mast cells, cytosol and nucleus. Becomes enriched near plasma membrane following stimulation. {ECO:0000250 UniProtKB:P84087}
Tissue Location	Nervous system. In hippocampus and cerebellum, expressed mainly by excitatory neurons. Down-regulated in brain cortex from patients suffering from Huntington disease, bipolar disorder or major depression. Down-regulated in cerebellum from patients with schizophrenia.

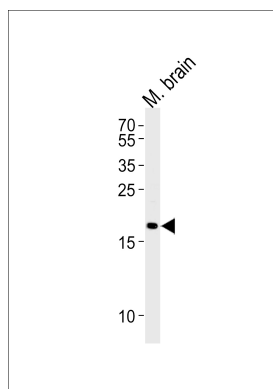
Background

Negatively regulates the formation of synaptic vesicle clustering at active zone to the presynaptic membrane in postmitotic neurons. Positively regulates a late step in synaptic vesicle exocytosis. Also involved in mast cell exocytosis (By similarity).

References

McMahon H.T., et al. *Cell* 83:111-119(1995).
 Ota T., et al. *Nat. Genet.* 36:40-45(2004).
 Raevskaya N.M., et al. *Gene* 359:127-137(2005).
 Harrison P.J., et al. *Lancet* 352:1669-1673(1998).
 Eastwood S.L., et al. *Brain Res. Bull.* 55:569-578(2001).

Images



Western blot analysis of lysate from mouse brain tissue, using CPLX2 Antibody (Center)(Cat. #AP20735c). AP20735c was diluted at 1:1000. A goat anti-rabbit IgG H&L(HRP) at 1:5000 dilution was used as the secondary antibody. Lysate at 35ug.

Please note: All products are 'FOR RESEARCH USE ONLY. NOT FOR USE IN DIAGNOSTIC OR THERAPEUTIC PROCEDURES'.