

KCTD4 Antibody (Center)

Purified Rabbit Polyclonal Antibody (Pab)

Catalog # AP20737c

Product Information

Application	WB, E
Primary Accession	Q8WVF5
Reactivity	Human, Rat, Mouse
Host	Rabbit
Clonality	Polyclonal
Isotype	Rabbit IgG
Clone Names	RB48456
Calculated MW	29967

Additional Information

Gene ID	386618
Other Names	BTB/POZ domain-containing protein KCTD4, KCTD4
Target/Specificity	This KCTD4 antibody is generated from a rabbit immunized with a KLH conjugated synthetic peptide between 160-191 amino acids from the Central region of human KCTD4.
Dilution	WB~~1:1000 E~~Use at an assay dependent concentration.
Format	Purified polyclonal antibody supplied in PBS with 0.09% (W/V) sodium azide. This antibody is purified through a protein A column, followed by peptide affinity purification.
Storage	Maintain refrigerated at 2-8°C for up to 2 weeks. For long term storage store at -20°C in small aliquots to prevent freeze-thaw cycles.
Precautions	KCTD4 Antibody (Center) is for research use only and not for use in diagnostic or therapeutic procedures.

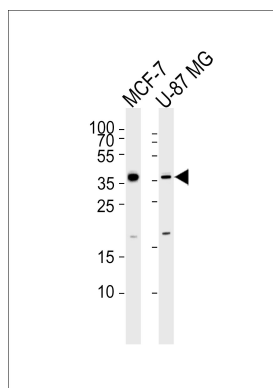
Protein Information

Name	KCTD4
-------------	-------

References

Ota T.,et al.Nat. Genet. 36:40-45(2004).
Dunham A.,et al.Nature 428:522-528(2004).

Images



Western blot analysis of lysates from MCF-7, U-87 MG cell line (from left to right), using KCTD4 Antibody (Center)(Cat. #AP20737c). AP20737c was diluted at 1:1000 at each lane. A goat anti-rabbit IgG H&L(HRP) at 1:5000 dilution was used as the secondary antibody. Lysates at 35ug per lane.

Please note: All products are 'FOR RESEARCH USE ONLY. NOT FOR USE IN DIAGNOSTIC OR THERAPEUTIC PROCEDURES'.