

PNP Antibody (Center)

Purified Rabbit Polyclonal Antibody (Pab)

Catalog # AP20740c

Product Information

Application	WB, E
Primary Accession	P00491
Reactivity	Human, Rat, Mouse
Host	Rabbit
Clonality	Polyclonal
Isotype	Rabbit IgG
Clone Names	RB49601
Calculated MW	32118

Additional Information

Gene ID	4860
Other Names	Purine nucleoside phosphorylase, PNP, Inosine phosphorylase, Inosine-guanosine phosphorylase, PNP, NP
Target/Specificity	This PNP antibody is generated from a rabbit immunized with a KLH conjugated synthetic peptide between 145-178 amino acids from the Central region of human PNP.
Dilution	WB~~1:1000 E~~Use at an assay dependent concentration.
Format	Purified polyclonal antibody supplied in PBS with 0.09% (W/V) sodium azide. This antibody is purified through a protein A column, followed by peptide affinity purification.
Storage	Maintain refrigerated at 2-8°C for up to 2 weeks. For long term storage store at -20°C in small aliquots to prevent freeze-thaw cycles.
Precautions	PNP Antibody (Center) is for research use only and not for use in diagnostic or therapeutic procedures.

Protein Information

Name	PNP
Synonyms	NP
Function	Catalyzes the phosphorolytic breakdown of the N-glycosidic bond in the beta-(deoxy)ribonucleoside molecules, with the formation of the corresponding free purine bases and pentose-1-phosphate

(PubMed:[23438750](#), PubMed:[9305964](#)). Preferentially acts on 6-oxopurine nucleosides including inosine and guanosine (PubMed:[9305964](#)).

Cellular Location

Cytoplasm.

Tissue Location

Expressed in red blood cells; overexpressed in red blood cells (cytoplasm) of patients with hereditary non-spherocytic hemolytic anemia of unknown etiology.

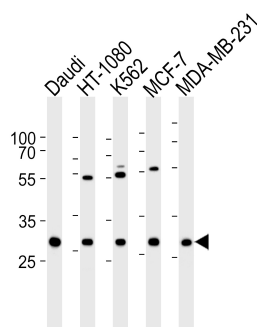
Background

The purine nucleoside phosphorylases catalyze the phosphorolytic breakdown of the N-glycosidic bond in the beta- (deoxy)ribonucleoside molecules, with the formation of the corresponding free purine bases and pentose-1-phosphate.

References

Williams S.R.,et al.Nucleic Acids Res. 12:5779-5787(1984).
Williams S.R.,et al.J. Biol. Chem. 262:2332-2338(1987).
Yu L.,et al.Environ. Health Perspect. 111:1421-1427(2003).
Ota T.,et al.Nat. Genet. 36:40-45(2004).
Ebert L.,et al.Submitted (MAY-2004) to the EMBL/GenBank/DDBJ databases.

Images



Western blot analysis of lysates from Daudi, HT-1080, K562, MCF-7, MDA-MB-231 cell line (from left to right), using PNP Antibody (Center)(Cat. #AP20740c). AP20740c was diluted at 1:1000 at each lane. A goat anti-rabbit IgG H&L(HRP) at 1:5000 dilution was used as the secondary antibody. Lysates at 35ug per lane.

Please note: All products are 'FOR RESEARCH USE ONLY. NOT FOR USE IN DIAGNOSTIC OR THERAPEUTIC PROCEDURES'.