

ZDHHC11 Antibody (C-term)

Purified Rabbit Polyclonal Antibody (Pab)

Catalog # AP20746c

Product Information

Application	WB, E
Primary Accession	Q9H8X9
Reactivity	Human
Host	Rabbit
Clonality	Polyclonal
Isotype	Rabbit IgG
Clone Names	RB49976
Calculated MW	45975

Additional Information

Gene ID	79844
Other Names	Probable palmitoyltransferase ZDHHC11, Zinc finger DHHC domain-containing protein 11, DHHC-11, Zinc finger protein 399, ZDHHC11, ZNF399
Target/Specificity	This ZDHHC11 antibody is generated from a rabbit immunized with a KLH conjugated synthetic peptide between 333-368 amino acids from the C-terminal region of human ZDHHC11.
Dilution	WB~~1:1000 E~~Use at an assay dependent concentration.
Format	Purified polyclonal antibody supplied in PBS with 0.09% (W/V) sodium azide. This antibody is purified through a protein A column, followed by peptide affinity purification.
Storage	Maintain refrigerated at 2-8°C for up to 2 weeks. For long term storage store at -20°C in small aliquots to prevent freeze-thaw cycles.
Precautions	ZDHHC11 Antibody (C-term) is for research use only and not for use in diagnostic or therapeutic procedures.

Protein Information

Name	ZDHHC11 (HGNC:19158)
Function	Endoplasmic reticulum-localized palmitoyltransferase that could catalyze the addition of palmitate onto various protein substrates and be involved in a variety of cellular processes (By similarity). Has a palmitoyltransferase activity toward NCDN and regulates NCDN association with endosome membranes through this palmitoylation (By similarity). May play a role in cell proliferation

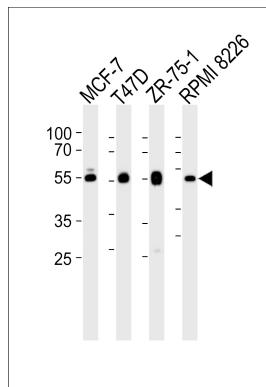
(PubMed:[28331227](#)).

Cellular Location	Endoplasmic reticulum membrane; Multi-pass membrane protein
Tissue Location	Expressed in testis..

References

Ota T.,et al.Nat. Genet. 36:40-45(2004).

Images



Western blot analysis of lysates from MCF-7, T47D, ZR-75-1, RPMI 8226 cell line (from left to right), using ZDHHC11 Antibody (C-term)(Cat. #AP20746c). AP20746c was diluted at 1:1000 at each lane. A goat anti-rabbit IgG H&L(HRP) at 1:5000 dilution was used as the secondary antibody. Lysates at 35ug per lane.

Please note: All products are 'FOR RESEARCH USE ONLY. NOT FOR USE IN DIAGNOSTIC OR THERAPEUTIC PROCEDURES'.