

# DNAJA1 Antibody (C-term)

Purified Rabbit Polyclonal Antibody (Pab)

Catalog # AP20747c

## Product Information

---

<b>Application</b>	WB, E
<b>Primary Accession</b>	<a href="#">P31689</a>
<b>Reactivity</b>	Human, Rat, Mouse
<b>Host</b>	Rabbit
<b>Clonality</b>	Polyclonal
<b>Isotype</b>	Rabbit IgG
<b>Clone Names</b>	RB49806
<b>Calculated MW</b>	44868

## Additional Information

---

<b>Gene ID</b>	3301
<b>Other Names</b>	DnaJ homolog subfamily A member 1, DnaJ protein homolog 2, HSDJ, Heat shock 40 kDa protein 4, Heat shock protein J2, HSJ-2, Human DnaJ protein 2, hDj-2, DNAJA1, DNAJ2, HDJ2, HSJ2, HSPF4
<b>Target/Specificity</b>	This DNAJA1 antibody is generated from a rabbit immunized with a KLH conjugated synthetic peptide between 379-414 amino acids from the C-terminal region of human DNAJA1.
<b>Dilution</b>	WB~~1:2000 E~~Use at an assay dependent concentration.
<b>Format</b>	Purified polyclonal antibody supplied in PBS with 0.09% (W/V) sodium azide. This antibody is purified through a protein A column, followed by peptide affinity purification.
<b>Storage</b>	Maintain refrigerated at 2-8°C for up to 2 weeks. For long term storage store at -20°C in small aliquots to prevent freeze-thaw cycles.
<b>Precautions</b>	DNAJA1 Antibody (C-term) is for research use only and not for use in diagnostic or therapeutic procedures.

## Protein Information

---

<b>Name</b>	DNAJA1
<b>Synonyms</b>	DNAJ2, HDJ2, HSJ2, HSPF4
<b>Function</b>	Co-chaperone for HSPA8/Hsc70 (PubMed: <a href="#">10816573</a> ). Stimulates ATP hydrolysis, but not the folding of unfolded proteins mediated by HSPA1A (in

vitro) (PubMed:[24318877](#)). Plays a role in protein transport into mitochondria via its role as co-chaperone. Functions as a co- chaperone for HSPA1B and negatively regulates the translocation of BAX from the cytosol to mitochondria in response to cellular stress, thereby protecting cells against apoptosis (PubMed:[14752510](#)). Promotes apoptosis in response to cellular stress mediated by exposure to anisomycin or UV (PubMed:[24512202](#)).

#### Cellular Location

Membrane; Lipid- anchor. Cytoplasm. Microsome. Nucleus. Cytoplasm, perinuclear region. Mitochondrion Note=Primarily associated with microsomes. A minor proportion is associated with mitochondria (By similarity). Primarily cytoplasmic. A minor proportion is associated with nuclei.

#### Tissue Location

Ubiquitous. Isoform 2 is highly expressed in testis and lung, but detected at low levels in thymus, prostate, colon and liver.

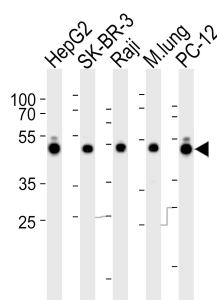
## Background

Co-chaperone of Hsc70. Seems to play a role in protein import into mitochondria.

## References

Oh S.,et al.Biochim. Biophys. Acta 1174:114-116(1993).  
 Chellaiah A.,et al.Biochim. Biophys. Acta 1174:111-113(1993).  
 Hu Y.,et al.Int. J. Androl. 27:343-349(2004).  
 Kalnine N.,et al.Submitted (MAY-2003) to the EMBL/GenBank/DDBJ databases.  
 Ota T.,et al.Nat. Genet. 36:40-45(2004).

## Images



Western blot analysis of lysates from HepG2, SK-BR-3, Raji cell line, mouse lung tissue lysate and rat PC-12 cell line (from left to right), using DNAJA1 Antibody (C-term)(Cat. #AP20747c). AP20747c was diluted at 1:1000 at each lane. A goat anti-rabbit IgG H&L(HRP) at 1:5000 dilution was used as the secondary antibody. Lysates at 35ug per lane.

Please note: All products are 'FOR RESEARCH USE ONLY. NOT FOR USE IN DIAGNOSTIC OR THERAPEUTIC PROCEDURES'.