

ANXA5 Antibody (Center)

Purified Rabbit Polyclonal Antibody (Pab)

Catalog # AP20748c

Product Information

Application	WB, E
Primary Accession	P08758
Reactivity	Human, Rat, Mouse
Host	Rabbit
Clonality	Polyclonal
Isotype	Rabbit IgG
Clone Names	RB50251
Calculated MW	35937

Additional Information

Gene ID	308
Other Names	Annexin A5, Anchorin CII, Annexin V, Annexin-5, Calphobindin I, CBP-I, Endonexin II, Lipocortin V, Placental anticoagulant protein 4, PP4, Placental anticoagulant protein I, PAP-I, Thromboplastin inhibitor, Vascular anticoagulant-alpha, VAC-alpha, ANXA5, ANX5, ENX2, PP4
Target/Specificity	This ANXA5 antibody is generated from a rabbit immunized with a KLH conjugated synthetic peptide between 94-128 amino acids from the Central region of human ANXA5.
Dilution	WB~~1:1000 E~~Use at an assay dependent concentration.
Format	Purified polyclonal antibody supplied in PBS with 0.09% (W/V) sodium azide. This antibody is purified through a protein A column, followed by peptide affinity purification.
Storage	Maintain refrigerated at 2-8°C for up to 2 weeks. For long term storage store at -20°C in small aliquots to prevent freeze-thaw cycles.
Precautions	ANXA5 Antibody (Center) is for research use only and not for use in diagnostic or therapeutic procedures.

Protein Information

Name	ANXA5
Synonyms	ANX5, ENX2, PP4
Function	This protein is an anticoagulant protein that acts as an indirect inhibitor of

the thromboplastin-specific complex, which is involved in the blood coagulation cascade.

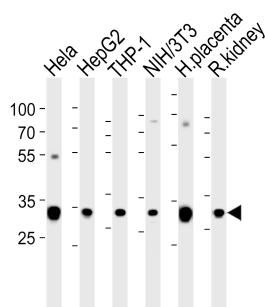
Background

This protein is an anticoagulant protein that acts as an indirect inhibitor of the thromboplastin-specific complex, which is involved in the blood coagulation cascade.

References

Funakoshi T.,et al.Biochemistry 26:8087-8092(1987).
Iwasaki A.,et al.J. Biochem. 102:1261-1273(1987).
Maurer-Fogy I.,et al.Eur. J. Biochem. 174:585-592(1988).
Kaplan R.,et al.J. Biol. Chem. 263:8037-8043(1988).
Pepinsky R.B.,et al.J. Biol. Chem. 263:10799-10811(1988).

Images



Western blot analysis of lysates from Hela, HepG2, THP-1, mouse NIH/3T3 cell line, human placenta and rat kidney tissue lysate (from left to right), using ANXA5 Antibody (Center) (Cat. #AP20748c). AP20748c was diluted at 1:1000 at each lane. A goat anti-rabbit IgG H&L (HRP) at 1:5000 dilution was used as the secondary antibody. Lysates at 35ug per lane.

Please note: All products are 'FOR RESEARCH USE ONLY. NOT FOR USE IN DIAGNOSTIC OR THERAPEUTIC PROCEDURES'.