

# CTDSP1 Antibody (N-term)

Purified Rabbit Polyclonal Antibody (Pab)

Catalog # AP20752a

## Product Information

---

<b>Application</b>	WB, E
<b>Primary Accession</b>	<a href="#">Q9GZU7</a>
<b>Reactivity</b>	Human, Mouse
<b>Host</b>	Rabbit
<b>Clonality</b>	Polyclonal
<b>Isotype</b>	Rabbit IgG
<b>Clone Names</b>	RB50786
<b>Calculated MW</b>	29203

## Additional Information

---

<b>Gene ID</b>	58190
<b>Other Names</b>	Carboxy-terminal domain RNA polymerase II polypeptide A small phosphatase 1, Nuclear LIM interactor-interacting factor 3, NLI-IF, NLI-interacting factor 3, Small C-terminal domain phosphatase 1, SCP1, Small CTD phosphatase 1, CTDSP1, NIF3, NLIIF, SCP1
<b>Target/Specificity</b>	This CTDSP1 antibody is generated from a rabbit immunized with a KLH conjugated synthetic peptide between 16-50 amino acids from the N-terminal region of human CTDSP1.
<b>Dilution</b>	WB~~1:1000 E~~Use at an assay dependent concentration.
<b>Format</b>	Purified polyclonal antibody supplied in PBS with 0.09% (W/V) sodium azide. This antibody is purified through a protein A column, followed by peptide affinity purification.
<b>Storage</b>	Maintain refrigerated at 2-8°C for up to 2 weeks. For long term storage store at -20°C in small aliquots to prevent freeze-thaw cycles.
<b>Precautions</b>	CTDSP1 Antibody (N-term) is for research use only and not for use in diagnostic or therapeutic procedures.

## Protein Information

---

<b>Name</b>	CTDSP1
<b>Synonyms</b>	NIF3, NLIIF, SCP1
<b>Function</b>	Preferentially catalyzes the dephosphorylation of 'Ser-5' within the tandem

7 residue repeats in the C-terminal domain (CTD) of the largest RNA polymerase II subunit POLR2A. Negatively regulates RNA polymerase II transcription, possibly by controlling the transition from initiation/capping to processive transcript elongation. Recruited by REST to neuronal genes that contain RE-1 elements, leading to neuronal gene silencing in non-neuronal cells.

**Cellular Location**

Nucleus. Note=Colocalizes with RNA polymerase II

**Tissue Location**

Expression is restricted to non-neuronal tissues. Highest expression in skeletal muscle, spleen, lung and placenta

## Background

---

Preferentially catalyzes the dephosphorylation of 'Ser- 5' within the tandem 7 residues repeats in the C-terminal domain (CTD) of the largest RNA polymerase II subunit POLR2A. Negatively regulates RNA polymerase II transcription, possibly by controlling the transition from initiation/capping to processive transcript elongation. Recruited by REST to neuronal genes that contain RE-1 elements, leading to neuronal gene silencing in non-neuronal cells.

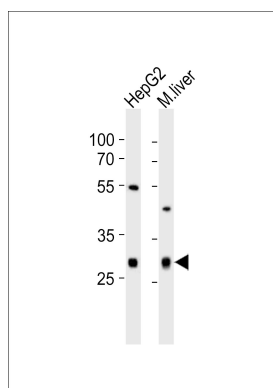
## References

---

Marquet S.,et al.Mamm. Genome 11:755-762(2000).  
Yeo M.,et al.J. Biol. Chem. 278:26078-26085(2003).  
Li W.B.,et al.Submitted (APR-2003) to the EMBL/GenBank/DDBJ databases.  
Hillier L.W.,et al.Nature 434:724-731(2005).  
Yeo M.,et al.Science 307:596-600(2005).

## Images

---



Western blot analysis of lysates from HepG2 cell line, mouse liver tissue lysate (from left to right), using CTDSP1 Antibody (N-term)(Cat. #AP20752a). AP20752a was diluted at 1:1000 at each lane. A goat anti-rabbit IgG H&L(HRP) at 1:10000 dilution was used as the secondary antibody. Lysates at 20ug per lane.

Please note: All products are 'FOR RESEARCH USE ONLY. NOT FOR USE IN DIAGNOSTIC OR THERAPEUTIC PROCEDURES'.