

GLRX5 Antibody (Center)

Purified Rabbit Polyclonal Antibody (Pab)

Catalog # AP20754c

Product Information

Application	WB, E
Primary Accession	Q86SX6
Reactivity	Human, Mouse
Host	Rabbit
Clonality	Polyclonal
Isotype	Rabbit IgG
Clone Names	RB49888
Calculated MW	16628

Additional Information

Gene ID	51218
Other Names	Glutaredoxin-related protein 5, mitochondrial, Monothiol glutaredoxin-5, GLRX5, C14orf87
Target/Specificity	This GLRX5 antibody is generated from a rabbit immunized with a KLH conjugated synthetic peptide between 93-127 amino acids from the Central region of human GLRX5.
Dilution	WB~~1:1000 E~~Use at an assay dependent concentration.
Format	Purified polyclonal antibody supplied in PBS with 0.09% (W/V) sodium azide. This antibody is purified through a protein A column, followed by peptide affinity purification.
Storage	Maintain refrigerated at 2-8°C for up to 2 weeks. For long term storage store at -20°C in small aliquots to prevent freeze-thaw cycles.
Precautions	GLRX5 Antibody (Center) is for research use only and not for use in diagnostic or therapeutic procedures.

Protein Information

Name	GLRX5
Synonyms	C14orf87
Function	Monothiol glutaredoxin involved in mitochondrial iron-sulfur (Fe/S) cluster transfer (PubMed: 20364084 , PubMed: 23615440). Receives 2Fe/2S clusters from scaffold protein ISCU and mediates their transfer to apoproteins, to the

4Fe/FS cluster biosynthesis machinery, or export from mitochondrion (PubMed:[20364084](#), PubMed:[23615440](#), PubMed:[24334290](#)). Required for normal regulation of hemoglobin synthesis by the iron- sulfur protein ACO1 (PubMed:[20364084](#)).

Cellular Location

Mitochondrion matrix

Background

Monothiol glutaredoxin involved in the biogenesis of iron-sulfur clusters. Required for normal iron homeostasis. Required for normal regulation of hemoglobin synthesis by the iron-sulfur protein ACO1.

References

Wingert R.A.,et al.Nature 436:1035-1039(2005).

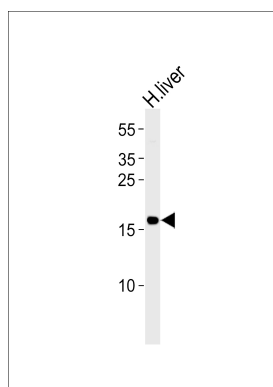
Wingert R.A.,et al.Nature 437:920-920(2005).

Kurosawa N.,et al.Submitted (JUL-2005) to the EMBL/GenBank/DDBJ databases.

Li W.B.,et al.Submitted (FEB-2003) to the EMBL/GenBank/DDBJ databases.

Mural R.J.,et al.Submitted (JUL-2005) to the EMBL/GenBank/DDBJ databases.

Images



Western blot analysis of lysate from human liver tissue lysate, using GLRX5 Antibody (Center)(Cat. #AP20754c). AP20754c was diluted at 1:1000. A goat anti-rabbit IgG H&L(HRP) at 1:5000 dilution was used as the secondary antibody. Lysate at 35ug.

Please note: All products are 'FOR RESEARCH USE ONLY. NOT FOR USE IN DIAGNOSTIC OR THERAPEUTIC PROCEDURES'.