

Human-AHCTF1 (S1232) Antibody

Purified Rabbit Polyclonal Antibody (Pab)

Catalog # AP20765b

Product Information

Application	WB, E
Primary Accession	Q8WYP5
Reactivity	Human
Host	Rabbit
Clonality	Polyclonal
Isotype	Rabbit IgG
Clone Names	RB46675

Additional Information

Other Names	Protein ELYS, Embryonic large molecule derived from yolk sac, Protein MEL-28, Putative AT-hook-containing transcription factor 1, AHCTF1, ELYS, TMBS62
Target/Specificity	This antibody is generated from a rabbit immunized with a KLH conjugated synthetic peptide between 1210-1260 amino acids from human.
Dilution	WB~~1:1000 E~~Use at an assay dependent concentration.
Format	Purified polyclonal antibody supplied in PBS with 0.09% (W/V) sodium azide. This antibody is purified through a protein A column, followed by peptide affinity purification.
Storage	Maintain refrigerated at 2-8°C for up to 2 weeks. For long term storage store at -20°C in small aliquots to prevent freeze-thaw cycles.
Precautions	Human-AHCTF1 (S1232) Antibody is for research use only and not for use in diagnostic or therapeutic procedures.

Protein Information

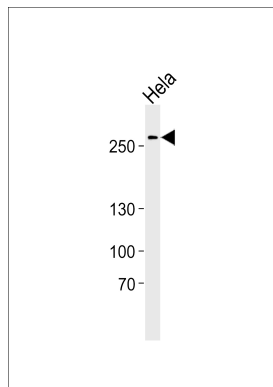
Background

Required for the assembly of a functional nuclear pore complex (NPC) on the surface of chromosomes as nuclei form at the end of mitosis. May initiate NPC assembly by binding to chromatin and recruiting the Nup107-160 subcomplex of the NPC. Also required for the localization of the Nup107-160 subcomplex of the NPC to the kinetochore during mitosis and for the completion of cytokinesis.

References

Kimura N.,et al.Genes Cells 7:435-446(2002).
Lightfoot J.,et al.Submitted (OCT-2002) to the EMBL/GenBank/DDBJ databases.
Gregory S.G.,et al.Nature 441:315-321(2006).
Bechtel S.,et al.BMC Genomics 8:399-399(2007).
Liu B.,et al.Submitted (JUL-1999) to the EMBL/GenBank/DDBJ databases.

Images



Western blot analysis of lysate from HeLa cell line, using Phospho-human-AHCTF1 (S1232). ctrl(Cat. #AP20765b). AP20765b was diluted at 1:1000. A goat anti-rabbit IgG H&L(HRP) at 1:5000 dilution was used as the secondary antibody. Lysate at 35ug.

Please note: All products are 'FOR RESEARCH USE ONLY. NOT FOR USE IN DIAGNOSTIC OR THERAPEUTIC PROCEDURES'.