

Human-FOSL2 (Y83) Antibody

Purified Rabbit Polyclonal Antibody (Pab)

Catalog # AP20766b

Product Information

Application	WB, E
Primary Accession	P15408
Reactivity	Human, Rat, Mouse
Host	Rabbit
Clonality	Polyclonal
Isotype	Rabbit IgG
Clone Names	RB46904
Calculated MW	35193

Additional Information

Gene ID	2355
Other Names	Fos-related antigen 2, FRA-2, FOSL2, FRA2
Target/Specificity	This antibody is generated from a rabbit immunized with a KLH conjugated synthetic peptide between 70-110 amino acids from human.
Dilution	WB~~1:1000 E~~Use at an assay dependent concentration.
Format	Purified polyclonal antibody supplied in PBS with 0.09% (W/V) sodium azide. This antibody is purified through a protein A column, followed by peptide affinity purification.
Storage	Maintain refrigerated at 2-8°C for up to 2 weeks. For long term storage store at -20°C in small aliquots to prevent freeze-thaw cycles.
Precautions	Human-FOSL2 (Y83) Antibody is for research use only and not for use in diagnostic or therapeutic procedures.

Protein Information

Name	FOSL2
Synonyms	FRA2
Function	Controls osteoclast survival and size (By similarity). As a dimer with JUN, activates LIF transcription (By similarity). Activates CEBPB transcription in PGE2-activated osteoblasts (By similarity).
Cellular Location	Nucleus {ECO:0000250 UniProtKB:P51145}.

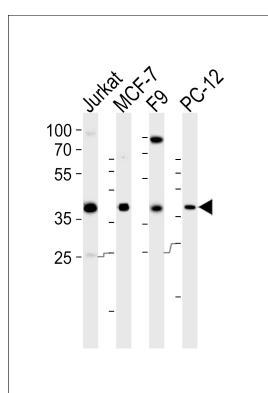
Background

Controls osteoclast survival and size (By similarity). As a dimer with JUN, activates LIF transcription (By similarity). Activates CEBPB transcription in PGE2-activated osteoblasts (By similarity).

References

Matsui M.,et al.Oncogene 5:249-255(1990).
Ota T.,et al.Nat. Genet. 36:40-45(2004).
Bechtel S.,et al.BMC Genomics 8:399-399(2007).
Halleck A.,et al.Submitted (JUN-2004) to the EMBL/GenBank/DDBJ databases.
Hillier L.W.,et al.Nature 434:724-731(2005).

Images



Western blot analysis of lysates from Jurkat, MCF-7, F9, PC-12 cell line (from left to right), using human-FOSL2 (Y83)Cat. #AP20766b). AP20766b was diluted at 1:1000 at each lane. A goat anti-rabbit IgG H&L(HRP) at 1:5000 dilution was used as the secondary antibody. Lysates at 35ug per lane.

Please note: All products are 'FOR RESEARCH USE ONLY. NOT FOR USE IN DIAGNOSTIC OR THERAPEUTIC PROCEDURES'.