

# HESRG Antibody (Center)

Purified Rabbit Polyclonal Antibody (Pab)

Catalog # AP20784c

## Product Information

---

<b>Application</b>	WB, E
<b>Primary Accession</b>	<a href="#">Q1W209</a>
<b>Reactivity</b>	Human
<b>Host</b>	Rabbit
<b>Clonality</b>	Polyclonal
<b>Isotype</b>	Rabbit IgG
<b>Clone Names</b>	RB50295
<b>Calculated MW</b>	24186

## Additional Information

---

<b>Other Names</b>	Embryonic stem cell-related gene protein, hES cell-related gene protein, ESRG, HESRG
<b>Target/Specificity</b>	This HESRG antibody is generated from a rabbit immunized with a KLH conjugated synthetic peptide between 27-61 amino acids from the Central region of human HESRG.
<b>Dilution</b>	WB~~1:1000 E~~Use at an assay dependent concentration.
<b>Format</b>	Purified polyclonal antibody supplied in PBS with 0.09% (W/V) sodium azide. This antibody is purified through a protein A column, followed by peptide affinity purification.
<b>Storage</b>	Maintain refrigerated at 2-8°C for up to 2 weeks. For long term storage store at -20°C in small aliquots to prevent freeze-thaw cycles.
<b>Precautions</b>	HESRG Antibody (Center) is for research use only and not for use in diagnostic or therapeutic procedures.

## Protein Information

---

<b>Name</b>	ESRG
<b>Synonyms</b>	HESRG
<b>Cellular Location</b>	Nucleus.
<b>Tissue Location</b>	Expressed only in fetal ovary and in undifferentiated ES cells.

## References

---

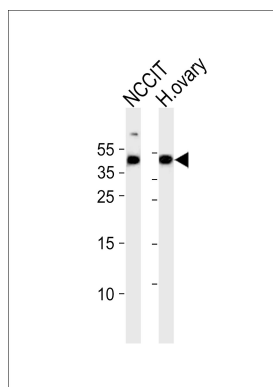
Zhao M.,et al.Biochem. Biophys. Res. Commun. 362:916-922(2007).

Li G.,et al.Biochem. Biophys. Res. Commun. 435:160-164(2013).

Muzny D.M.,et al.Nature 440:1194-1198(2006).

## Images

---



Western blot analysis of lysates from NCCIT cell line and human ovary tissue lysate (from left to right), using HESRG Antibody (Center)(Cat. #AP20784c). AP20784c was diluted at 1:1000 at each lane. A goat anti-rabbit IgG H&L(HRP) at 1:5000 dilution was used as the secondary antibody. Lysates at 35ug per lane.

Please note: All products are 'FOR RESEARCH USE ONLY. NOT FOR USE IN DIAGNOSTIC OR THERAPEUTIC PROCEDURES'.