

# MTX2 Antibody (Center)

Purified Rabbit Polyclonal Antibody (Pab)

Catalog # AP20787c

## Product Information

---

Application	WB, E
Primary Accession	<a href="#">O75431</a>
Reactivity	Human, Mouse
Host	Rabbit
Clonality	Polyclonal
Isotype	Rabbit IgG
Clone Names	RB49789
Calculated MW	29763

## Additional Information

---

Gene ID	10651
Other Names	Metaxin-2, Mitochondrial outer membrane import complex protein 2, MTX2
Target/Specificity	This MTX2 antibody is generated from a rabbit immunized with a KLH conjugated synthetic peptide between 102-126 amino acids from the Central region of human MTX2.
Dilution	WB~~1:1000 E~~Use at an assay dependent concentration.
Format	Purified polyclonal antibody supplied in PBS with 0.09% (W/V) sodium azide. This antibody is purified through a protein A column, followed by peptide affinity purification.
Storage	Maintain refrigerated at 2-8°C for up to 2 weeks. For long term storage store at -20°C in small aliquots to prevent freeze-thaw cycles.
Precautions	MTX2 Antibody (Center) is for research use only and not for use in diagnostic or therapeutic procedures.

## Protein Information

---

Name	MTX2
Function	Involved in transport of proteins into the mitochondrion.
Cellular Location	Mitochondrion outer membrane. Mitochondrion

## Background

---

Involved in transport of proteins into the mitochondrion.

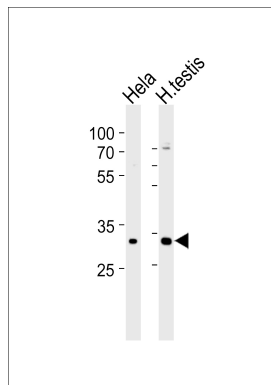
## References

---

Armstrong L.C.,et al.J. Cell. Biochem. 74:11-22(1999).  
Ota T.,et al.Nat. Genet. 36:40-45(2004).  
Hillier L.W.,et al.Nature 434:724-731(2005).  
Mural R.J.,et al.Submitted (SEP-2005) to the EMBL/GenBank/DDBJ databases.  
Burkard T.R.,et al.BMC Syst. Biol. 5:17-17(2011).

## Images

---



Western blot analysis of lysates from HeLa cell line human testis tissue lysate(from left to right), using MTX2 Antibody (Center)(Cat. #AP20787c). AP20787c was diluted at 1:1000 at each lane. A goat anti-rabbit IgG H&L(HRP) at 1:5000 dilution was used as the secondary antibody. Lysates at 35ug per lane.

Please note: All products are 'FOR RESEARCH USE ONLY. NOT FOR USE IN DIAGNOSTIC OR THERAPEUTIC PROCEDURES'.