

# SERPINA1(Short peptide from AAT) Antibody (C-term)

Purified Rabbit Polyclonal Antibody (Pab)

Catalog # AP20788c

## Product Information

---

Application	WB, E
Primary Accession	<a href="#">P01009</a>
Reactivity	Human
Host	Rabbit
Clonality	Polyclonal
Isotype	Rabbit IgG
Clone Names	RB49796
Calculated MW	46737

## Additional Information

---

Gene ID	5265
Other Names	Alpha-1-antitrypsin, Alpha-1 protease inhibitor, Alpha-1-antiproteinase, Serpin A1, Short peptide from AAT, SPAAT, SERPINA1, AAT, PI
Target/Specificity	This SERPINA1(Short peptide from AAT) antibody is generated from a rabbit immunized with a KLH conjugated synthetic peptide between 391-418 amino acids from the C-terminal region of human SERPINA1(Short peptide from AAT).
Dilution	WB~~1:1000 E~~Use at an assay dependent concentration.
Format	Purified polyclonal antibody supplied in PBS with 0.09% (W/V) sodium azide. This antibody is purified through a protein A column, followed by peptide affinity purification.
Storage	Maintain refrigerated at 2-8°C for up to 2 weeks. For long term storage store at -20°C in small aliquots to prevent freeze-thaw cycles.
Precautions	SERPINA1(Short peptide from AAT) Antibody (C-term) is for research use only and not for use in diagnostic or therapeutic procedures.

## Protein Information

---

Name	SERPINA1 ( <a href="#">HGNC:8941</a> )
Synonyms	AAT, PI
Function	Inhibitor of serine proteases. Its primary target is elastase, but it also has a moderate affinity for plasmin and thrombin. Irreversibly inhibits trypsin,

chymotrypsin and plasminogen activator. The aberrant form inhibits insulin-induced NO synthesis in platelets, decreases coagulation time and has proteolytic activity against insulin and plasmin.

**Cellular Location**

Secreted. Endoplasmic reticulum. Note=The S and Z allele are not secreted effectively and accumulate intracellularly in the endoplasmic reticulum

**Tissue Location**

Ubiquitous. Expressed in leukocytes and plasma.

## Background

---

Inhibitor of serine proteases. Its primary target is elastase, but it also has a moderate affinity for plasmin and thrombin. Irreversibly inhibits trypsin, chymotrypsin and plasminogen activator. The aberrant form inhibits insulin-induced NO synthesis in platelets, decreases coagulation time and has proteolytic activity against insulin and plasmin.

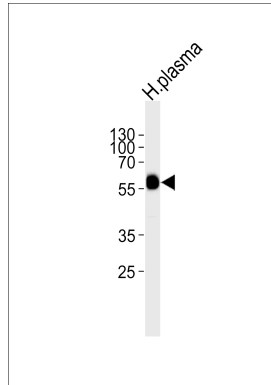
## References

---

- Bollen A.,et al.DNA 2:255-264(1983).  
Long G.L.,et al.Biochemistry 23:4828-4837(1984).  
Rosenberg S.,et al.Nature 312:77-80(1984).  
Ciliberto G.,et al.Cell 41:531-540(1985).  
Nukiwa T.,et al.J. Biol. Chem. 261:15989-15994(1986).

## Images

---



Western blot analysis of lysate from human plasma tissue lysate, using SERPINA1(Short peptide from AAT) Antibody (C-term)(Cat. #AP20788c). AP20788c was diluted at 1:1000. A goat anti-rabbit IgG H&L(HRP) at 1:5000 dilution was used as the secondary antibody. Lysate at 35ug.

Please note: All products are 'FOR RESEARCH USE ONLY. NOT FOR USE IN DIAGNOSTIC OR THERAPEUTIC PROCEDURES'.