

TRIM43B Antibody (Center)

Purified Rabbit Polyclonal Antibody (Pab)

Catalog # AP20799c

Product Information

Application	WB, E
Primary Accession	A6NCK2
Reactivity	Human
Host	Rabbit
Clonality	Polyclonal
Isotype	Rabbit IgG
Clone Names	RB49774
Calculated MW	52310

Additional Information

Gene ID	653192
Other Names	Tripartite motif-containing protein 43B, TRIM43B
Target/Specificity	This TRIM43B antibody is generated from a rabbit immunized with a KLH conjugated synthetic peptide between 222-257 amino acids from the Central region of human TRIM43B.
Dilution	WB~~1:1000 E~~Use at an assay dependent concentration.
Format	Purified polyclonal antibody supplied in PBS with 0.09% (W/V) sodium azide. This antibody is purified through a protein A column, followed by peptide affinity purification.
Storage	Maintain refrigerated at 2-8°C for up to 2 weeks. For long term storage store at -20°C in small aliquots to prevent freeze-thaw cycles.
Precautions	TRIM43B Antibody (Center) is for research use only and not for use in diagnostic or therapeutic procedures.

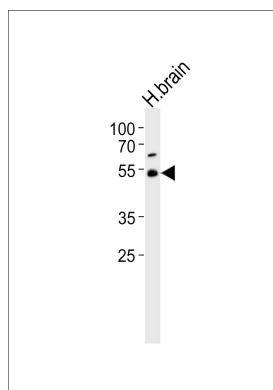
Protein Information

Name	TRIM43B
------	---------

References

Hillier L.W.,et al.Nature 434:724-731(2005).

Images



Western blot analysis of lysate from human brain tissue lysate, using TRIM43B Antibody (Center)(Cat. #AP20799c). AP20799c was diluted at 1:1000. A goat anti-rabbit IgG H&L(HRP) at 1:10000 dilution was used as the secondary antibody. Lysate at 35ug.

Please note: All products are 'FOR RESEARCH USE ONLY. NOT FOR USE IN DIAGNOSTIC OR THERAPEUTIC PROCEDURES'.