

TOMM40L Antibody (N-term)

Purified Rabbit Polyclonal Antibody (Pab)

Catalog # AP20800a

Product Information

Application	WB, E
Primary Accession	Q969M1
Reactivity	Human, Rat, Mouse
Host	Rabbit
Clonality	Polyclonal
Isotype	Rabbit IgG
Clone Names	RB50132
Calculated MW	33917

Additional Information

Gene ID	84134
Other Names	Mitochondrial import receptor subunit TOM40B, Protein TOMM40-like, TOMM40L, TOMM40B
Target/Specificity	This TOMM40L antibody is generated from a rabbit immunized with a KLH conjugated synthetic peptide between 25-58 amino acids from the N-terminal region of human TOMM40L.
Dilution	WB~~1:1000 E~~Use at an assay dependent concentration.
Format	Purified polyclonal antibody supplied in PBS with 0.09% (W/V) sodium azide. This antibody is purified through a protein A column, followed by peptide affinity purification.
Storage	Maintain refrigerated at 2-8°C for up to 2 weeks. For long term storage store at -20°C in small aliquots to prevent freeze-thaw cycles.
Precautions	TOMM40L Antibody (N-term) is for research use only and not for use in diagnostic or therapeutic procedures.

Protein Information

Name	TOMM40L
Synonyms	TOMM40B
Function	Potential channel-forming protein implicated in import of protein precursors into mitochondria.

Cellular Location

Mitochondrion outer membrane; Multi-pass membrane protein

Background

Potential channel-forming protein implicated in import of protein precursors into mitochondria (By similarity).

References

Ota T.,et al.Nat. Genet. 36:40-45(2004).

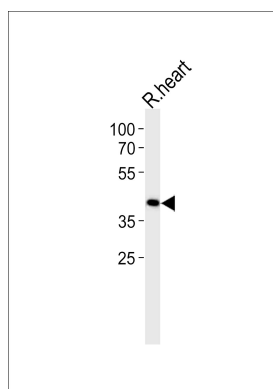
Bechtel S.,et al.BMC Genomics 8:399-399(2007).

Gregory S.G.,et al.Nature 441:315-321(2006).

Mural R.J.,et al.Submitted (SEP-2005) to the EMBL/GenBank/DDBJ databases.

Sjoebloom T.,et al.Science 314:268-274(2006).

Images



Western blot analysis of lysate from rat heart tissue lysate, using TOMM40L Antibody (N-term)(Cat. #AP20800a). AP20800a was diluted at 1:1000. A goat anti-rabbit IgG H&L(HRP) at 1:10000 dilution was used as the secondary antibody. Lysate at 35ug.

Please note: All products are 'FOR RESEARCH USE ONLY. NOT FOR USE IN DIAGNOSTIC OR THERAPEUTIC PROCEDURES'.