

MINOS1 Antibody (N-term)

Purified Rabbit Polyclonal Antibody (Pab)

Catalog # AP20802a

Product Information

Application	WB, E
Primary Accession	Q5TGZ0
Reactivity	Mouse
Host	Rabbit
Clonality	Polyclonal
Isotype	Rabbit IgG
Clone Names	RB50297
Calculated MW	8808

Additional Information

Gene ID	440574
Other Names	MICOS complex subunit MIC10, Mitochondrial inner membrane organizing system protein 1, MINOS1, C1orf151, MIC10
Target/Specificity	This MINOS1 antibody is generated from a rabbit immunized with a KLH conjugated synthetic peptide between 1-33 amino acids from the N-terminal region of human MINOS1.
Dilution	WB~~1:200 E~~Use at an assay dependent concentration.
Format	Purified polyclonal antibody supplied in PBS with 0.05% (V/V) Proclin 300. This antibody is purified through a protein A column, followed by peptide affinity purification.
Storage	Maintain refrigerated at 2-8°C for up to 2 weeks. For long term storage store at -20°C in small aliquots to prevent freeze-thaw cycles.
Precautions	MINOS1 Antibody (N-term) is for research use only and not for use in diagnostic or therapeutic procedures.

Protein Information

Name	MICOS10 (HGNC:32068)
Function	Component of the MICOS complex, a large protein complex of the mitochondrial inner membrane that plays crucial roles in the maintenance of crista junctions, inner membrane architecture, and formation of contact sites to the outer membrane.

Cellular Location

Mitochondrion inner membrane; Single-pass membrane protein. Note=The C-terminus is located in the intermembrane space (By similarity), while the location of the N- terminus has not been determined yet. As some programs predict the presence of 2 closely apposed membrane domains, it has been proposed that the protein may cross the membrane twice and that both termini may face the intermembrane space (PubMed:22114354). {ECO:0000250, ECO:0000269 | PubMed:22114354}

Background

May play a role in mitochondrial architecture (By similarity).

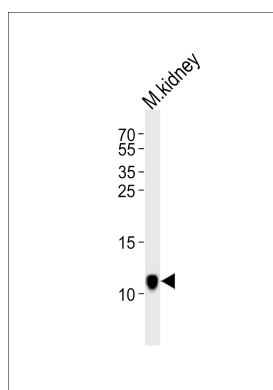
References

Gregory S.G.,et al.Nature 441:315-321(2006).

Alkhaja A.K.,et al.Mol. Biol. Cell 23:247-257(2012).

Van Damme P.,et al.Proc. Natl. Acad. Sci. U.S.A. 109:12449-12454(2012).

Images



Western blot analysis of lysate from mouse kidney tissue lysate, using MINOS1 Antibody (N-term)(Cat. #AP20802a). AP20802a was diluted at 1:1000. A goat anti-rabbit IgG H&L(HRP) at 1:10000 dilution was used as the secondary antibody. Lysate at 35ug.

Please note: All products are 'FOR RESEARCH USE ONLY. NOT FOR USE IN DIAGNOSTIC OR THERAPEUTIC PROCEDURES'.