

# PRDM13 Antibody (N-term)

Purified Rabbit Polyclonal Antibody (Pab)

Catalog # AP20805a

## Product Information

---

<b>Application</b>	WB, IHC-P, E
<b>Primary Accession</b>	<a href="#">Q9H4Q3</a>
<b>Reactivity</b>	Human
<b>Host</b>	Rabbit
<b>Clonality</b>	Polyclonal
<b>Isotype</b>	Rabbit IgG
<b>Clone Names</b>	RB49974
<b>Calculated MW</b>	73981

## Additional Information

---

<b>Gene ID</b>	59336
<b>Other Names</b>	PR domain zinc finger protein 13, 211-, PR domain-containing protein 13, PRDM13, PFM10
<b>Target/Specificity</b>	This PRDM13 antibody is generated from a rabbit immunized with a KLH conjugated synthetic peptide between 2-36 amino acids from the N-terminal region of human PRDM13.
<b>Dilution</b>	WB~~1:1000 IHC-P~~1:100 E~~Use at an assay dependent concentration.
<b>Format</b>	Purified polyclonal antibody supplied in PBS with 0.05% (V/V) Proclin 300. This antibody is prepared by Saturated Ammonium Sulfate (SAS) precipitation followed by dialysis against PBS.
<b>Storage</b>	Maintain refrigerated at 2-8°C for up to 2 weeks. For long term storage store at -20°C in small aliquots to prevent freeze-thaw cycles.
<b>Precautions</b>	PRDM13 Antibody (N-term) is for research use only and not for use in diagnostic or therapeutic procedures.

## Protein Information

---

<b>Name</b>	PRDM13
<b>Synonyms</b>	PFM10
<b>Function</b>	May be involved in transcriptional regulation. Is required for the differentiation of KISS1-expressing neurons in the arcuate (Arc) nucleus of the hypothalamus. Is a critical regulator of GABAergic cell fate in the cerebellum,

required for normal postnatal cerebellar development (By similarity).

**Cellular Location**

Nucleus.

**Tissue Location**

In the embryo, expressed in neural stem cells of the hindbrain.

## Background

---

May be involved in transcriptional regulation.

## References

---

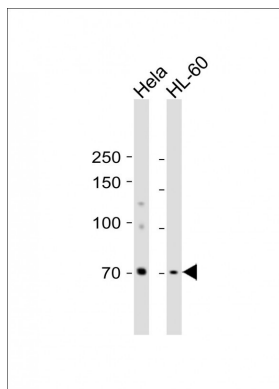
Yang X.-H.,et al.Submitted (JUL-2000) to the EMBL/GenBank/DDBJ databases.

Mungall A.J.,et al.Nature 425:805-811(2003).

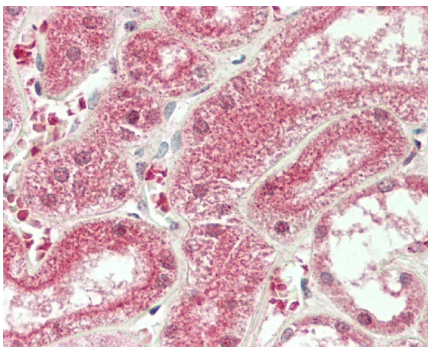
Mural R.J.,et al.Submitted (SEP-2005) to the EMBL/GenBank/DDBJ databases.

## Images

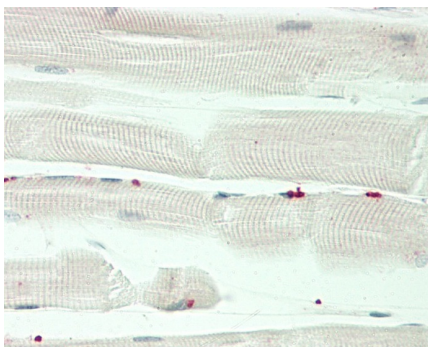
---



All lanes: Anti-PRDM13 Antibody (N-term) at 1:1000 dilution Lane 1: HeLa whole cell lysate Lane 2: HL-60 whole cell lysate Lysates/proteins at 20 µg per lane. Secondary: Goat Anti-Rabbit IgG, (H+L), Peroxidase conjugated (ASP1615) at 1/15000 dilution. Observed band size: 74 KDa Blocking/Dilution buffer: 5% NFDM/TBST.



Formalin-fixed and paraffin-embedded H.kidney tissue reacted with PRDM13 Antibody (N-term) (Cat#AP20805a).



Formalin-fixed and paraffin-embedded H.skeletal muscle tissue reacted with PRDM13 Antibody (N-term) (Cat#AP20805a).

Please note: All products are 'FOR RESEARCH USE ONLY. NOT FOR USE IN DIAGNOSTIC OR THERAPEUTIC PROCEDURES'.