

IL13RA1 Antibody (C-term)

Purified Rabbit Polyclonal Antibody (Pab)

Catalog # AP20810c

Product Information

Application	WB, E
Primary Accession	P78552
Reactivity	Human
Host	Rabbit
Clonality	Polyclonal
Isotype	Rabbit IgG
Clone Names	RB44306
Calculated MW	48760

Additional Information

Gene ID	3597
Other Names	Interleukin-13 receptor subunit alpha-1, IL-13 receptor subunit alpha-1, IL-13R subunit alpha-1, IL-13R-alpha-1, IL-13RA1, Cancer/testis antigen 19, CT19, CD213a1, IL13RA1, IL13R, IL13RA
Target/Specificity	This IL13RA1 antibody is generated from a rabbit immunized with a KLH conjugated synthetic peptide between 207-238 amino acids from the C-terminal region of human IL13RA1.
Dilution	WB~~1:1000 E~~Use at an assay dependent concentration.
Format	Purified polyclonal antibody supplied in PBS with 0.09% (W/V) sodium azide. This antibody is purified through a protein A column, followed by peptide affinity purification.
Storage	Maintain refrigerated at 2-8°C for up to 2 weeks. For long term storage store at -20°C in small aliquots to prevent freeze-thaw cycles.
Precautions	IL13RA1 Antibody (C-term) is for research use only and not for use in diagnostic or therapeutic procedures.

Protein Information

Name	IL13RA1
Synonyms	IL13R, IL13RA
Function	Binds with low affinity to interleukin-13 (IL13). Together with IL4RA can form a functional receptor for IL13. Also serves as an alternate accessory

protein to the common cytokine receptor gamma chain for interleukin-4 (IL4) signaling, but cannot replace the function of IL2RG in allowing enhanced interleukin-2 (IL2) binding activity.

Cellular Location

Membrane; Single-pass type I membrane protein.

Tissue Location

Ubiquitous. Highest levels in heart, liver, skeletal muscle and ovary; lowest levels in brain, lung and kidney Also found in B-cells, T-cells and endothelial cells

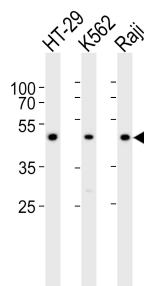
Background

Binds with low affinity to interleukin-13 (IL13). Together with IL4RA can form a functional receptor for IL13. Also serves as an alternate accessory protein to the common cytokine receptor gamma chain for interleukin-4 (IL4) signaling, but cannot replace the function of IL2RG in allowing enhanced interleukin-2 (IL2) binding activity.

References

Miloux B.,et al.FEBS Lett. 401:163-166(1997).
Gauchat J.-F.,et al.Submitted (JAN-1997) to the EMBL/GenBank/DDBJ databases.
Aman M.J.,et al.J. Biol. Chem. 271:29265-29270(1996).
Wada M.,et al.Submitted (SEP-1999) to the EMBL/GenBank/DDBJ databases.
Ota T.,et al.Nat. Genet. 36:40-45(2004).

Images



Western blot analysis of lysates from HT-29, K562, Raji cell line (from left to right), using IL13RA1 Antibody (C-term)(Cat. #AP20810c). AP20810c was diluted at 1:1000 at each lane. A goat anti-rabbit IgG H&L(HRP) at 1:10000 dilution was used as the secondary antibody. Lysates at 35ug per lane.

Please note: All products are 'FOR RESEARCH USE ONLY. NOT FOR USE IN DIAGNOSTIC OR THERAPEUTIC PROCEDURES'.