

# TRIM60 Antibody (Center)

Purified Rabbit Polyclonal Antibody (Pab)

Catalog # AP20814c

## Product Information

---

<b>Application</b>	WB, E
<b>Primary Accession</b>	<a href="#">Q495X7</a>
<b>Reactivity</b>	Human
<b>Host</b>	Rabbit
<b>Clonality</b>	Polyclonal
<b>Isotype</b>	Rabbit IgG
<b>Clone Names</b>	RB47862
<b>Calculated MW</b>	55114

## Additional Information

---

<b>Gene ID</b>	166655
<b>Other Names</b>	Tripartite motif-containing protein 60, RING finger protein 129, RING finger protein 33, TRIM60, RNF129, RNF33
<b>Target/Specificity</b>	This TRIM60 antibody is generated from a rabbit immunized with a KLH conjugated synthetic peptide between 177-211 amino acids from the Central region of human TRIM60.
<b>Dilution</b>	WB~~1:1000 E~~Use at an assay dependent concentration.
<b>Format</b>	Purified polyclonal antibody supplied in PBS with 0.09% (W/V) sodium azide. This antibody is purified through a protein A column, followed by peptide affinity purification.
<b>Storage</b>	Maintain refrigerated at 2-8°C for up to 2 weeks. For long term storage store at -20°C in small aliquots to prevent freeze-thaw cycles.
<b>Precautions</b>	TRIM60 Antibody (Center) is for research use only and not for use in diagnostic or therapeutic procedures.

## Protein Information

---

<b>Name</b>	TRIM60
<b>Synonyms</b>	RNF129, RNF33
<b>Function</b>	E3 SUMO-protein ligase that mediates SUMOylation of TAB2 leading to inhibition of NF-kappa-B and MAPK pathways by suppressing the TRAF6/TAB2/TAK1 complex.

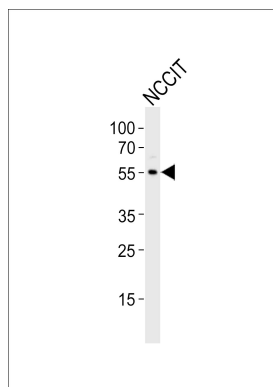
## References

---

Ota T.,et al.Nat. Genet. 36:40-45(2004).

## Images

---



Western blot analysis of lysate from NCCIT cell line, using TRIM60 Antibody (Center)(Cat. #AP20814c). AP20814c was diluted at 1:1000. A goat anti-rabbit IgG H&L(HRP) at 1:10000 dilution was used as the secondary antibody. Lysate at 35ug.

Please note: All products are 'FOR RESEARCH USE ONLY. NOT FOR USE IN DIAGNOSTIC OR THERAPEUTIC PROCEDURES'.