

ZNF610 Antibody (C-term)

Purified Rabbit Polyclonal Antibody (Pab)

Catalog # AP20820c

Product Information

Application	WB, E
Primary Accession	Q8N9Z0
Reactivity	Human
Host	Rabbit
Clonality	Polyclonal
Isotype	Rabbit IgG
Clone Names	RB49257
Calculated MW	53489

Additional Information

Gene ID	162963
Other Names	Zinc finger protein 610, ZNF610
Target/Specificity	This ZNF610 antibody is generated from a rabbit immunized with a KLH conjugated synthetic peptide between 433-468 amino acids from the C-terminal region of human ZNF610.
Dilution	WB~~1:1000 E~~Use at an assay dependent concentration.
Format	Purified polyclonal antibody supplied in PBS with 0.09% (W/V) sodium azide. This antibody is purified through a protein A column, followed by peptide affinity purification.
Storage	Maintain refrigerated at 2-8°C for up to 2 weeks. For long term storage store at -20°C in small aliquots to prevent freeze-thaw cycles.
Precautions	ZNF610 Antibody (C-term) is for research use only and not for use in diagnostic or therapeutic procedures.

Protein Information

Name	ZNF610
Function	May be involved in transcriptional regulation.
Cellular Location	Nucleus.

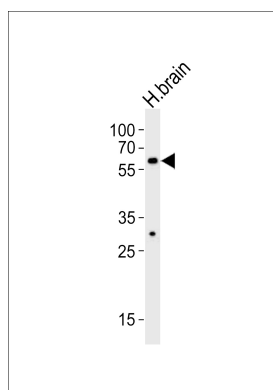
Background

May be involved in transcriptional regulation.

References

Ota T.,et al.Nat. Genet. 36:40-45(2004).
Grimwood J.,et al.Nature 428:529-535(2004).
Bechtel S.,et al.BMC Genomics 8:399-399(2007).

Images



Western blot analysis of lysate from human brain tissue lysate, using ZNF610 Antibody (C-term)(Cat. #AP20820c). AP20820c was diluted at 1:1000. A goat anti-rabbit IgG H&L(HRP) at 1:10000 dilution was used as the secondary antibody. Lysate at 35ug.

Please note: All products are 'FOR RESEARCH USE ONLY. NOT FOR USE IN DIAGNOSTIC OR THERAPEUTIC PROCEDURES'.