

GBAS Antibody (Center)

Purified Rabbit Polyclonal Antibody (Pab)

Catalog # AP20821c

Product Information

Application	WB, E
Primary Accession	075323
Reactivity	Human, Mouse
Host	Rabbit
Clonality	Polyclonal
Isotype	Rabbit IgG
Clone Names	RB50817
Calculated MW	33743

Additional Information

Gene ID	2631
Other Names	Protein NipSnap homolog 2, NipSnap2, Glioblastoma-amplified sequence, GBAS, NIPSNAP2
Target/Specificity	This GBAS antibody is generated from a rabbit immunized with a KLH conjugated synthetic peptide between 176-210 amino acids from the Central region of human GBAS.
Dilution	WB~~1:1000 E~~Use at an assay dependent concentration.
Format	Purified polyclonal antibody supplied in PBS with 0.09% (W/V) sodium azide. This antibody is purified through a protein A column, followed by peptide affinity purification.
Storage	Maintain refrigerated at 2-8°C for up to 2 weeks. For long term storage store at -20°C in small aliquots to prevent freeze-thaw cycles.
Precautions	GBAS Antibody (Center) is for research use only and not for use in diagnostic or therapeutic procedures.

Protein Information

Name	NIPSNAP2 {ECO:0000303 PubMed:30982665, ECO:0000312 HGNC:HGNC:4179}
Function	Protein involved in mitophagy by facilitating recruitment of the autophagy machinery required for clearance of damaged mitochondria (PubMed: 30982665). Accumulates on the mitochondria surface in response to mitochondrial depolarization and acts as a 'eat me' signal by recruiting

proteins involved in selective autophagy, such as autophagy receptors (CALCOCO2/NDP52, NBR1, SQSTM1/p62, TAX1BP1 and WDFY3/ALFY) and ATG8 family proteins (MAP1LC3A, MAP1LC3B, MAP1LC3C, GABARAP, GABARAPL1 and GABARAPL2) (PubMed:[30982665](#)).

Cellular Location

Mitochondrion matrix

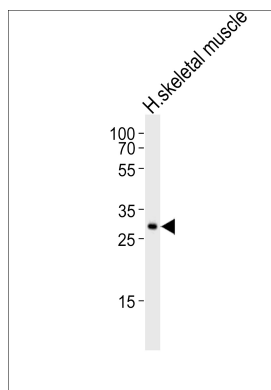
Tissue Location

Widely expressed (PubMed:9615231). Most abundant in heart and skeletal muscle (PubMed:9615231)

References

Wang X.-Y.,et al.Genomics 49:448-451(1998).
Seroussi E.,et al.Gene 212:13-20(1998).
Kalnina N.,et al.Submitted (OCT-2004) to the EMBL/GenBank/DDBJ databases.
Ota T.,et al.Nat. Genet. 36:40-45(2004).
Ebert L.,et al.Submitted (MAY-2004) to the EMBL/GenBank/DDBJ databases.

Images



Western blot analysis of lysate from human skeletal muscle tissue lysate, using GBAS Antibody (Center)(Cat. #AP20821c). AP20821c was diluted at 1:1000. A goat anti-rabbit IgG H&L(HRP) at 1:10000 dilution was used as the secondary antibody. Lysate at 35ug.

Citations

- [Mitochondrial proteins NIP-SNAP-1 and -2 are a target for the immunomodulatory activity of clarithromycin, which involves NF-κB-mediated cytokine production.](#)

Please note: All products are 'FOR RESEARCH USE ONLY. NOT FOR USE IN DIAGNOSTIC OR THERAPEUTIC PROCEDURES'.