

DHX8 Antibody (N-term)

Purified Rabbit Polyclonal Antibody (Pab)

Catalog # AP20835a

Product Information

Application	WB, E
Primary Accession	Q14562
Reactivity	Human, Mouse
Host	Rabbit
Clonality	Polyclonal
Isotype	Rabbit IgG
Clone Names	RB49830
Calculated MW	139315

Additional Information

Gene ID	1659
Other Names	ATP-dependent RNA helicase DHX8, DEAH box protein 8, RNA helicase HRH1, DHX8, DDX8
Target/Specificity	This DHX8 antibody is generated from a rabbit immunized with a KLH conjugated synthetic peptide between 339-373 amino acids from the N-terminal region of human DHX8.
Dilution	WB~~1:1000 E~~Use at an assay dependent concentration.
Format	Purified polyclonal antibody supplied in PBS with 0.09% (W/V) sodium azide. This antibody is purified through a protein A column, followed by peptide affinity purification.
Storage	Maintain refrigerated at 2-8°C for up to 2 weeks. For long term storage store at -20°C in small aliquots to prevent freeze-thaw cycles.
Precautions	DHX8 Antibody (N-term) is for research use only and not for use in diagnostic or therapeutic procedures.

Protein Information

Name	DHX8
Synonyms	DDX8
Function	Involved in pre-mRNA splicing as component of the spliceosome (PubMed: 11991638 , PubMed: 28076346 , PubMed: 28502770). Facilitates nuclear export of spliced mRNA by releasing the RNA from the spliceosome

(PubMed:[8608946](#)).

Cellular Location

Nucleus

Tissue Location

Expressed in skin, cervix and nerve. Also expressed in the brain.

Background

Facilitates nuclear export of spliced mRNA by releasing the RNA from the spliceosome.

References

Ono Y.,et al.Mol. Cell. Biol. 14:7611-7620(1994).

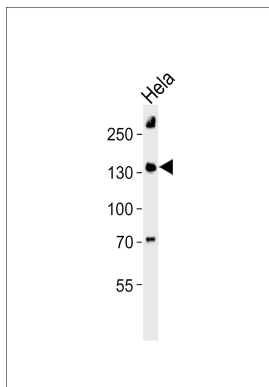
Ohno M.,et al.Genes Dev. 10:997-1007(1996).

Jurica M.S.,et al.RNA 8:426-439(2002).

Neuhaus E.M.,et al.J. Cell Sci. 119:3047-3056(2006).

Dephoure N.,et al.Proc. Natl. Acad. Sci. U.S.A. 105:10762-10767(2008).

Images



Western blot analysis of lysate from HeLa cell line, using DHX8 Antibody (N-term)(Cat. #AP20835a). AP20835a was diluted at 1:1000. A goat anti-rabbit IgG H&L(HRP) at 1:10000 dilution was used as the secondary antibody. Lysate at 35ug.

Please note: All products are 'FOR RESEARCH USE ONLY. NOT FOR USE IN DIAGNOSTIC OR THERAPEUTIC PROCEDURES'.