

# MRGPRX3 Antibody (N-term)

Purified Rabbit Polyclonal Antibody (Pab)

Catalog # AP20838a

## Product Information

---

<b>Application</b>	WB, E
<b>Primary Accession</b>	<a href="#">Q96LB0</a>
<b>Reactivity</b>	Human
<b>Host</b>	Rabbit
<b>Clonality</b>	Polyclonal
<b>Isotype</b>	Rabbit IgG
<b>Clone Names</b>	RB49950
<b>Calculated MW</b>	36483

## Additional Information

---

<b>Gene ID</b>	117195
<b>Other Names</b>	Mas-related G-protein coupled receptor member X3, Sensory neuron-specific G-protein coupled receptor 1/2, MRGPRX3, MRGX3, SNSR1, SNSR2
<b>Target/Specificity</b>	This MRGPRX3 antibody is generated from a rabbit immunized with a KLH conjugated synthetic peptide between 9-43 amino acids from the N-terminal region of human MRGPRX3.
<b>Dilution</b>	WB~~1:1000 E~~Use at an assay dependent concentration.
<b>Format</b>	Purified polyclonal antibody supplied in PBS with 0.09% (W/V) sodium azide. This antibody is purified through a protein A column, followed by peptide affinity purification.
<b>Storage</b>	Maintain refrigerated at 2-8°C for up to 2 weeks. For long term storage store at -20°C in small aliquots to prevent freeze-thaw cycles.
<b>Precautions</b>	MRGPRX3 Antibody (N-term) is for research use only and not for use in diagnostic or therapeutic procedures.

## Protein Information

---

<b>Name</b>	MRGPRX3
<b>Synonyms</b>	MRGX3, SNSR1, SNSR2
<b>Function</b>	Orphan receptor. Probably involved in the function of nociceptive neurons. May regulate nociceptor function and/or development, including the sensation or modulation of pain. Potently activated by enkephalins (By

similarity).

**Cellular Location**

Cell membrane; Multi-pass membrane protein.

**Tissue Location**

Uniquely localized in a subset of small dorsal root and trigeminal sensory neurons.

## Background

---

Orphan receptor. Probably involved in the function of nociceptive neurons. May regulate nociceptor function and/or development, including the sensation or modulation of pain. Potently activated by enkephalins (By similarity).

## References

---

Dong X.,et al.Cell 106:619-632(2001).

Lembo P.M.C.,et al.Nat. Neurosci. 5:201-209(2002).

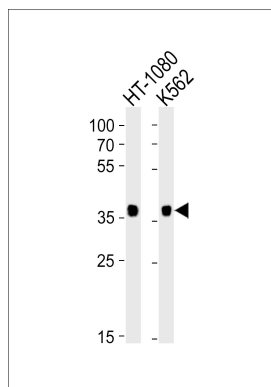
Martin A.L.,et al.Submitted (DEC-2007) to the EMBL/GenBank/DDBJ databases.

Taylor T.D.,et al.Nature 440:497-500(2006).

Mural R.J.,et al.Submitted (SEP-2005) to the EMBL/GenBank/DDBJ databases.

## Images

---



Western blot analysis of lysates from HT-1080, K562 cell line (from left to right), using MRGPRX3 Antibody (N-term)(Cat. #AP20838a). AP20838a was diluted at 1:1000 at each lane. A goat anti-rabbit IgG H&L(HRP) at 1:10000 dilution was used as the secondary antibody. Lysates at 35ug per lane.

Please note: All products are 'FOR RESEARCH USE ONLY. NOT FOR USE IN DIAGNOSTIC OR THERAPEUTIC PROCEDURES'.