

TEX101 Antibody (C-term)

Purified Rabbit Polyclonal Antibody (Pab)

Catalog # AP20841c

Product Information

Application	WB, E
Primary Accession	Q9BY14
Reactivity	Human
Host	Rabbit
Clonality	Polyclonal
Isotype	Rabbit IgG
Clone Names	RB49328
Calculated MW	26667

Additional Information

Gene ID	83639
Other Names	Testis-expressed sequence 101 protein, Cell surface receptor NYD-SP8, Scleroderma-associated autoantigen, Spermatogenesis-related gene protein, TEX101, SGRG
Target/Specificity	This TEX101 antibody is generated from a rabbit immunized with a KLH conjugated synthetic peptide between 214-246 amino acids from the C-terminal region of human TEX101.
Dilution	WB~~1:500-1:1000 E~~Use at an assay dependent concentration.
Format	Purified polyclonal antibody supplied in PBS with 0.09% (W/V) sodium azide. This antibody is purified through a protein A column, followed by peptide affinity purification.
Storage	Maintain refrigerated at 2-8°C for up to 2 weeks. For long term storage store at -20°C in small aliquots to prevent freeze-thaw cycles.
Precautions	TEX101 Antibody (C-term) is for research use only and not for use in diagnostic or therapeutic procedures.

Protein Information

Name	TEX101 (HGNC:30722)
Synonyms	SGRG
Function	Plays a role in fertilization by controlling binding of sperm to zona pellucida and migration of spermatozoa into the oviduct (By similarity). May play a role

in signal transduction and promote protein tyrosine phosphorylation (By similarity).

Cellular Location

Cell membrane {ECO:0000250|UniProtKB:Q9JMI7}; Lipid-anchor, GPI-anchor {ECO:0000250|UniProtKB:Q9JMI7}. Membrane raft {ECO:0000250|UniProtKB:Q9JMI7}. Cytoplasmic vesicle, secretory vesicle, acrosome {ECO:0000250|UniProtKB:Q9JMI7}. Secreted {ECO:0000250|UniProtKB:Q9JMI7}. Cytoplasmic vesicle {ECO:0000250|UniProtKB:Q9JMI7}. Note=Located on plasma membrane of spermatocytes, round and elongated spermatids, and testicular spermatozoa. {ECO:0000250|UniProtKB:Q9JMI7}

Tissue Location

Detected in testis and spermatogonia. Not detected in spermatocytes. Detected in blood leukocytes

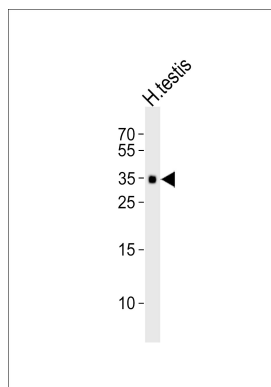
Background

May play a role in signal transduction and promote protein tyrosine phosphorylation (By similarity).

References

Teng X.,et al.Biochem. Biophys. Res. Commun. 342:1223-1227(2006).
Li J.M.,et al.Submitted (NOV-2000) to the EMBL/GenBank/DDBJ databases.
Yang J.,et al.Submitted (FEB-2001) to the EMBL/GenBank/DDBJ databases.
Clark H.F.,et al.Genome Res. 13:2265-2270(2003).

Images



Western blot analysis of lysate from human testis tissue lysate, using TEX101 Antibody (C-term)(Cat. #AP20841c). AP20841c was diluted at 1:1000. A goat anti-rabbit IgG H&L(HRP) at 1:10000 dilution was used as the secondary antibody. Lysate at 35ug.

Please note: All products are 'FOR RESEARCH USE ONLY. NOT FOR USE IN DIAGNOSTIC OR THERAPEUTIC PROCEDURES'.