

Mouse Ror2 Antibody (C-term)

Purified Rabbit Polyclonal Antibody (Pab)

Catalog # AP20846c

Product Information

Application	WB, IHC-P, E
Primary Accession	Q9Z138
Reactivity	Human, Mouse
Host	Rabbit
Clonality	Polyclonal
Isotype	Rabbit IgG
Clone Names	RB50890
Calculated MW	105005

Additional Information

Other Names	Tyrosine-protein kinase transmembrane receptor ROR2, mROR2, Neurotrophic tyrosine kinase, receptor-related 2, Ror2
Target/Specificity	This Mouse Ror2 antibody is generated from a rabbit immunized with a KLH conjugated synthetic peptide between 756-790 amino acids from the C-terminal region of human Mouse Ror2.
Dilution	WB~~1:1000 IHC-P~~1:100~500 E~~Use at an assay dependent concentration.
Format	Purified polyclonal antibody supplied in PBS with 0.09% (W/V) sodium azide. This antibody is purified through a protein A column, followed by peptide affinity purification.
Storage	Maintain refrigerated at 2-8°C for up to 2 weeks. For long term storage store at -20°C in small aliquots to prevent freeze-thaw cycles.
Precautions	Mouse Ror2 Antibody (C-term) is for research use only and not for use in diagnostic or therapeutic procedures.

Protein Information

Name	Ror2
Function	Tyrosine-protein kinase receptor which may be involved in the early formation of the chondrocytes. It seems to be required for cartilage and growth plate development (PubMed: 10700181). Phosphorylates YWHAB, leading to induction of osteogenesis and bone formation. In contrast, has also been shown to have very little tyrosine kinase activity in vitro. May act as a receptor for wnt ligand WNT5A which may result in the inhibition of WNT3A-mediated signaling (By similarity).

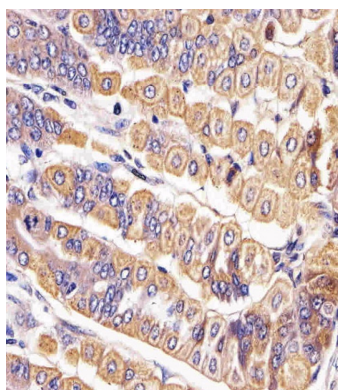
Background

Tyrosine-protein kinase receptor which may be involved in the early formation of the chondrocytes. It seems to be required for cartilage and growth plate development. Phosphorylates YWHAB, leading to induction of osteogenesis and bone formation (By similarity).

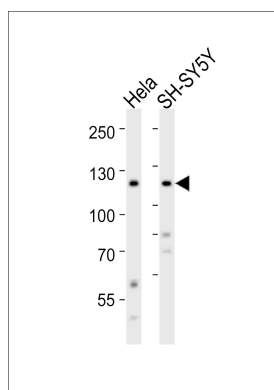
References

Oishi I., et al. *Genes Cells* 4:41-56(1999).
Church D.M., et al. *PLoS Biol.* 7:E1000112-E1000112(2009).
DeChiara T.M., et al. *Nat. Genet.* 24:271-274(2000).
van Wijk N.V., et al. *Biochem. Biophys. Res. Commun.* 390:211-216(2009).

Images



Immunohistochemical analysis of paraffin-embedded M. stomach section using Mouse Ror2 Antibody (C-term)(Cat#AP20846c). AP20846c was diluted at 1:25 dilution. A undiluted biotinylated goat polyvalent antibody was used as the secondary, followed by DAB staining.



Western blot analysis of lysates from HeLa, SH-SY5Y cell line (from left to right), using Mouse Ror2 Antibody (C-term)(Cat. #AP20846c). AP20846c was diluted at 1:1000 at each lane. A goat anti-rabbit IgG H&L(HRP) at 1:10000 dilution was used as the secondary antibody. Lysates at 20ug per lane.

Please note: All products are 'FOR RESEARCH USE ONLY. NOT FOR USE IN DIAGNOSTIC OR THERAPEUTIC PROCEDURES'.