

# Mouse Kdm6b Antibody (Center)

Purified Rabbit Polyclonal Antibody (Pab)

Catalog # AP20854c

## Product Information

---

Application	WB, E
Primary Accession	<a href="#">Q5NCY0</a>
Reactivity	Human, Mouse
Host	Rabbit
Clonality	Polyclonal
Isotype	Rabbit IgG
Clone Names	RB50943
Calculated MW	176355

## Additional Information

---

Gene ID	216850
Other Names	Lysine-specific demethylase 6B, 11411-, JmjC domain-containing protein 3, Jumonji domain-containing protein 3, Kdm6b, Jmjd3, Kiaa0346
Target/Specificity	This Mouse Kdm6b antibody is generated from a rabbit immunized with a KLH conjugated synthetic peptide between 1023-1057 amino acids of Mouse Kdm6b.
Dilution	WB~~1:1000 E~~Use at an assay dependent concentration.
Format	Purified polyclonal antibody supplied in PBS with 0.09% (W/V) sodium azide. This antibody is purified through a protein A column, followed by peptide affinity purification.
Storage	Maintain refrigerated at 2-8°C for up to 2 weeks. For long term storage store at -20°C in small aliquots to prevent freeze-thaw cycles.
Precautions	Mouse Kdm6b Antibody (Center) is for research use only and not for use in diagnostic or therapeutic procedures.

## Protein Information

---

Name	Kdm6b
Synonyms	Jmjd3, Kiaa0346
Function	Histone demethylase that specifically demethylates 'Lys-27' of histone H3, thereby playing a central role in histone code. Demethylates trimethylated and dimethylated H3 'Lys-27'. Plays a central role in regulation of posterior

development, by regulating HOX gene expression. Involved in inflammatory response by participating in macrophage differentiation in case of inflammation by regulating gene expression and macrophage differentiation (PubMed:[17825402](#)). Plays a demethylase-independent role in chromatin remodeling to regulate T-box family member-dependent gene expression by acting as a link between T-box factors and the SMARCA4-containing SWI/SNF remodeling complex (PubMed:[21095589](#)).

#### Cellular Location

Nucleus.

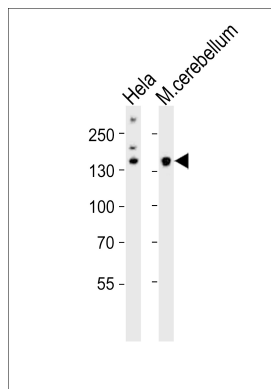
## Background

Histone demethylase that specifically demethylates 'Lys- 27' of histone H3, thereby playing a central role in histone code. Demethylates trimethylated and dimethylated H3 'Lys-27'. Plays a central role in regulation of posterior development, by regulating HOX gene expression. Involved in inflammatory response by participating in macrophage differentiation in case of inflammation by regulating gene expression and macrophage differentiation.

## References

Church D.M.,et al.PLoS Biol. 7:E1000112-E1000112(2009).  
Okazaki N.,et al.DNA Res. 10:167-180(2003).  
Carninci P.,et al.Science 309:1559-1563(2005).  
De Santa F.,et al.Cell 130:1083-1094(2007).

## Images



Western blot analysis of lysates from HeLa cell line, mouse cerebellum tissue (from left to right), using Mouse Kdm6b Antibody (Center)(Cat. #AP20854c). AP20854c was diluted at 1:1000 at each lane. A goat anti-rabbit IgG H&L(HRP) at 1:10000 dilution was used as the secondary antibody. Lysates at 20ug per lane.

## Citations

- [Esculetin protects against early sepsis via attenuating inflammation by inhibiting NF-κB and STAT1/STAT3 signaling](#)

Please note: All products are 'FOR RESEARCH USE ONLY. NOT FOR USE IN DIAGNOSTIC OR THERAPEUTIC PROCEDURES'.