

# ABT1 Antibody (C-term)

Purified Rabbit Polyclonal Antibody (Pab)

Catalog # AP20859c

## Product Information

---

<b>Application</b>	WB, E
<b>Primary Accession</b>	<a href="#">Q9ULW3</a>
<b>Reactivity</b>	Human
<b>Host</b>	Rabbit
<b>Clonality</b>	Polyclonal
<b>Isotype</b>	Rabbit IgG
<b>Clone Names</b>	RB50044
<b>Calculated MW</b>	31079

## Additional Information

---

<b>Gene ID</b>	29777
<b>Other Names</b>	Activator of basal transcription 1, hABT1, Basal transcriptional activator, ABT1
<b>Target/Specificity</b>	This ABT1 antibody is generated from a rabbit immunized with a KLH conjugated synthetic peptide between 259-292 amino acids from the C-terminal region of human ABT1.
<b>Dilution</b>	WB~~1:1000 E~~Use at an assay dependent concentration.
<b>Format</b>	Purified polyclonal antibody supplied in PBS with 0.09% (W/V) sodium azide. This antibody is purified through a protein A column, followed by peptide affinity purification.
<b>Storage</b>	Maintain refrigerated at 2-8°C for up to 2 weeks. For long term storage store at -20°C in small aliquots to prevent freeze-thaw cycles.
<b>Precautions</b>	ABT1 Antibody (C-term) is for research use only and not for use in diagnostic or therapeutic procedures.

## Protein Information

---

<b>Name</b>	ABT1
<b>Function</b>	Could be a novel TATA-binding protein (TBP) which can function as a basal transcription activator. Can act as a regulator of basal transcription for class II genes (By similarity).
<b>Cellular Location</b>	Nucleus. Nucleus, nucleolus

## Background

---

Could be a novel TATA-binding protein (TBP) which can function as a basal transcription activator. Can act as a regulator of basal transcription for class II genes (By similarity).

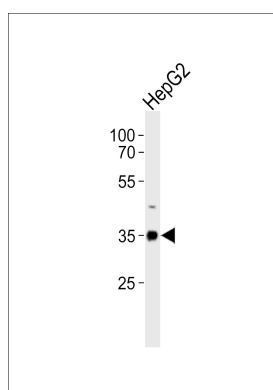
## References

---

Oda T.,et al.Mol. Cell. Biol. 20:1407-1418(2000).  
Mungall A.J.,et al.Nature 425:805-811(2003).  
Gauci S.,et al.Anal. Chem. 81:4493-4501(2009).  
de Planell-Saguer M.,et al.Hum. Mol. Genet. 18:2115-2126(2009).  
Burkard T.R.,et al.BMC Syst. Biol. 5:17-17(2011).

## Images

---



Western blot analysis of lysate from HepG2 cell line, using ABT1 Antibody (C-term)(Cat. #AP20859c). AP20859c was diluted at 1:1000. A goat anti-rabbit IgG H&L(HRP) at 1:10000 dilution was used as the secondary antibody. Lysate at 20ug.

Please note: All products are 'FOR RESEARCH USE ONLY. NOT FOR USE IN DIAGNOSTIC OR THERAPEUTIC PROCEDURES'.