

## (Mouse) Dlk1 Antibody (C-term)

Purified Rabbit Polyclonal Antibody (Pab)

Catalog # AP20860c

### Product Information

---

<b>Application</b>	WB, FC, E
<b>Primary Accession</b>	<a href="#">Q09163</a>
<b>Reactivity</b>	Human, Rat, Mouse
<b>Host</b>	Rabbit
<b>Clonality</b>	Polyclonal
<b>Isotype</b>	Rabbit IgG
<b>Clone Names</b>	RB51210
<b>Calculated MW</b>	41320

### Additional Information

---

<b>Gene ID</b>	13386
<b>Other Names</b>	Protein delta homolog 1, DLK-1, Adipocyte differentiation inhibitor protein, Preadipocyte factor 1, Pref-1, Fetal antigen 1, FA1, Dlk1, Dlk, Pref1, Scp-1
<b>Target/Specificity</b>	This (Mouse) Dlk1 antibody is generated from a rabbit immunized with a KLH conjugated synthetic peptide between 372-405 amino acids from the C-terminal region of human (Mouse) Dlk1.
<b>Dilution</b>	WB~~1:500-1:1000 FC~~1:25 E~~Use at an assay dependent concentration.
<b>Format</b>	Purified polyclonal antibody supplied in PBS with 0.09% (W/V) sodium azide. This antibody is purified through a protein A column, followed by peptide affinity purification.
<b>Storage</b>	Maintain refrigerated at 2-8°C for up to 2 weeks. For long term storage store at -20°C in small aliquots to prevent freeze-thaw cycles.
<b>Precautions</b>	(Mouse) Dlk1 Antibody (C-term) is for research use only and not for use in diagnostic or therapeutic procedures.

### Protein Information

---

<b>Name</b>	Dlk1
<b>Synonyms</b>	Dlk, Pref1, Scp-1
<b>Function</b>	May have a role in neuroendocrine differentiation. Inhibits adipocyte differentiation.

## Cellular Location

Membrane; Single-pass type I membrane protein. Cytoplasm  
{ECO:0000250|UniProtKB:O70534}

## Tissue Location

Highly expressed in fetal liver, placenta, adult adrenal gland, brain, testis and ovary and, to a lesser degree, in adult kidney, muscle, thymus and heart.

## Background

May have a role in neuroendocrine differentiation. Inhibits adipocyte differentiation.

## References

Laborda J.,et al.J. Biol. Chem. 268:3817-3820(1993).

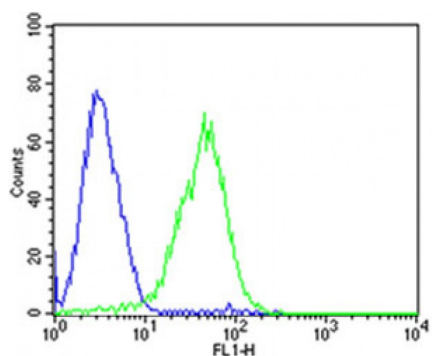
Smas C.M.,et al.Cell 73:725-734(1993).

Lee Y.L.,et al.Biochim. Biophys. Acta 1261:223-232(1995).

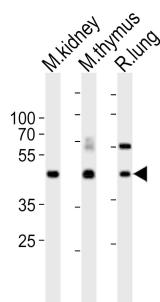
Maruyama K.,et al.Submitted (AUG-1993) to the EMBL/GenBank/DDBJ databases.

Smas C.M.,et al.Biochemistry 33:9257-9265(1994).

## Images



Flow cytometric analysis of HepG2 cells using (Mouse) Dlk1 Antibody (C-term)(green, Cat#AP20860c) compared to an isotype control of mouse IgG2b(blue). AP20860c was diluted at 1:25 dilution. An Alexa Fluor® 488 goat anti-mouse IgG at 1:400 dilution was used as the secondary antibody.



Western blot analysis of lysates from mouse kidney, mouse thymus, rat lung tissue lysate (from left to right), using Dlk1 Antibody (C-term)(Cat. #AP20860c). AP20860c was diluted at 1:1000 at each lane. A goat anti-rabbit IgG H&L(HRP) at 1:10000 dilution was used as the secondary antibody. Lysates at 20ug per lane.

## Citations

- [Administration of CoCl Improves Functional Recovery in a Rat Model of Sciatic Nerve Transection Injury.](#)

Please note: All products are 'FOR RESEARCH USE ONLY. NOT FOR USE IN DIAGNOSTIC OR THERAPEUTIC PROCEDURES'.